



# Bluetooth USB Adapter

## Quick Start Guide

Version 1.0

© All rights reserved.

All trade names are registered trademarks of respective manufacturers listed.

The Bluetooth name and the Bluetooth trademarks are owned by Bluetooth SIG, Inc.

This manual may not be copied in any media or form without the written consent of original maker.

## Table of Contents

WELCOME .....	2
Features .....	2
System Requirements .....	2
Before You Start.....	2
Install Driver in Windows 7 .....	3

# Welcome

Thank you for your purchase of the Bluetooth USB Adapter. Featuring Bluetooth wireless technology, Bluetooth USB Adapter creates cable-free connections between your PCs and other Bluetooth devices. Bluetooth USB Adapter supports Bluetooth 3.0 standard and is compatible with all Bluetooth certified devices.

## Features

- Compliant with Bluetooth standard version 3.0.
- Support for Microsoft Windows XP, Vista and 7.
- Easy operation and setting up.

## System requirements

- Processor : Intel Celeron / Pentium III, IV; AMD Duron / Athlon
- Operating System : Microsoft Windows XP, Vista or 7.
- System memory : 64MB at least
- Hard Drive Free Space : 250MB

## Before you start

Please remove any previous version of Bluetooth software existing in your system.

The remove procedures are as follows:

Step 1 : Click Start/Settings, then select Control Panel.

Step 2 : In the Control Panel window, double click Add/Remove programs icon.

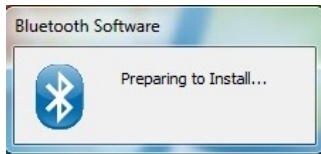
Step 3 : Find out the WIDCOMM or other Bluetooth Software then remove it.

## Install Driver in Windows 7

The following steps tell you how to install the WIDCOMM Bluetooth driver in Windows 7. Other Windows OS is similar procedures as Windows 7 installation below.

### Step 1:

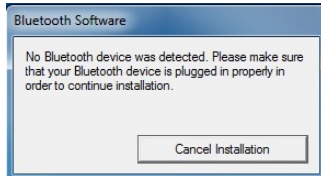
Put WIDCOMM Driver CD into CD drive of your PC, an auto-installation program will start to guide you to complete the installation step by step.



### Step 2:

Installation program will remind you to plug in the Bluetooth USB Adapter if you don't put it into your PC.

This dialog box will not pop up if you already have Bluetooth USB Adapter in your PC.



### Step 3:

Click **Next** to continue.



### Step 4:

Select "I accept the terms in the license agreement"

Click **Next** to continue.



## Step 5:

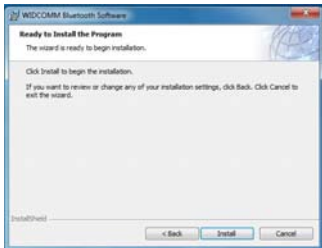
Press “Change...” button to select a new folder or leave it unchanged to use default path.

Click **Next** to continue.



## Step 6:

Click **Install** to start the installation.



## Step 7:

Wait files copy in processing.



## Step 8:

Click **Finish** to complete the installation.

