



## **USB - SERIAL CONVERTER**



**User Manual  
DA-70156 Rev.4**

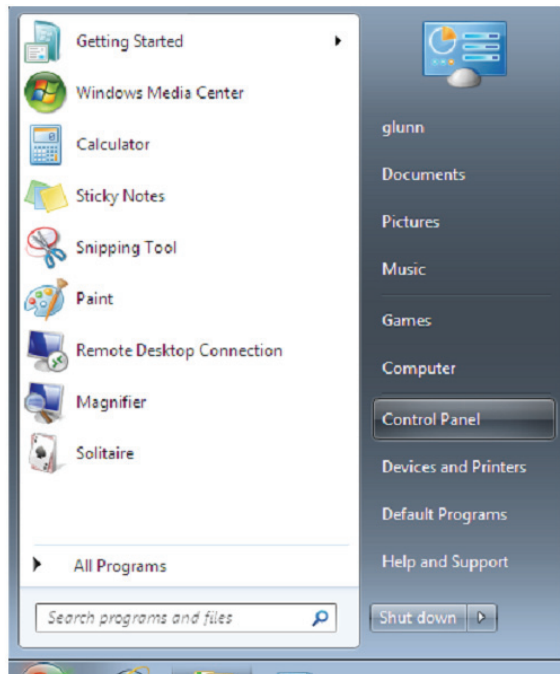
# Windows 7/8 Installation Guide

Step 1: Insert CD Driver of this product to the CD-ROM. Connect the device to a spare USB port on your PC.

Step 2: If there is an available Internet connection, Windows 7 will silently connect to the Windows Update website and install any suitable driver it finds for the device.

If the automatic installation takes place there is no need to continue with the procedure outlined below. If no suitable driver is automatically found then the following procedure should be followed.

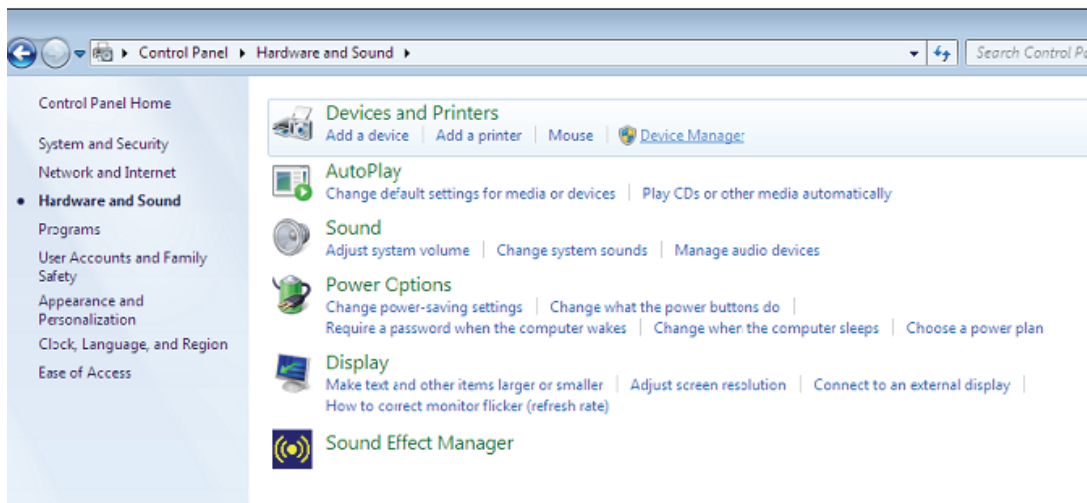
Press the Windows start button to bring up the start menu and select “Control Panel”.



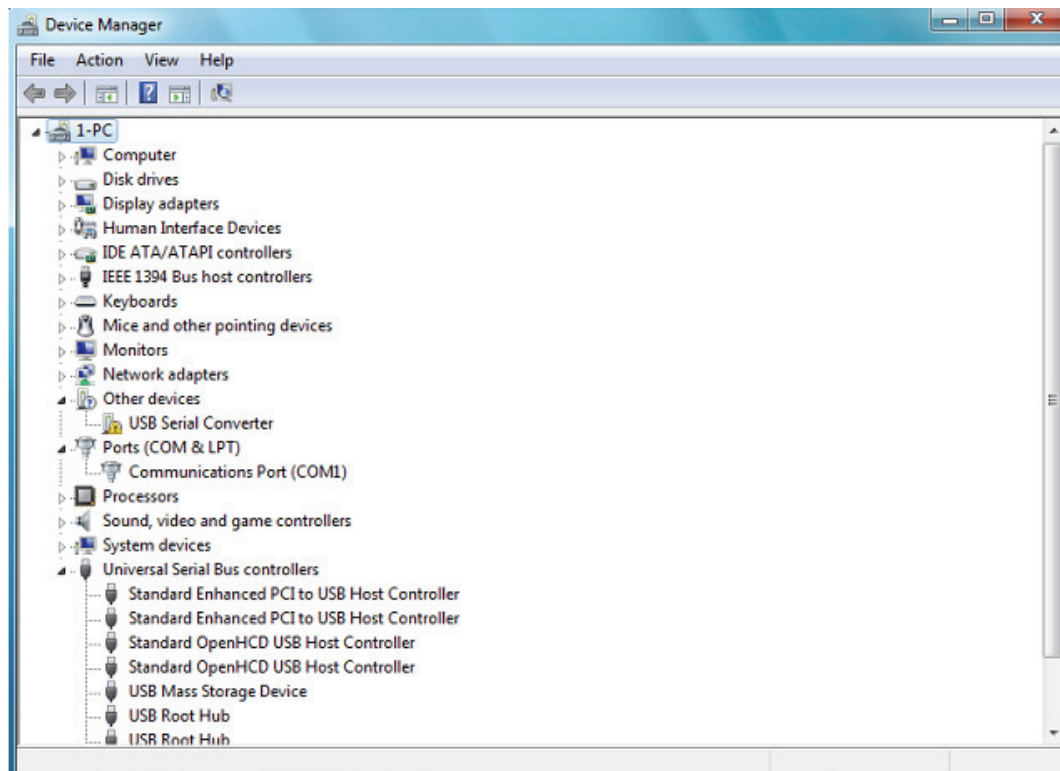
Step 3: From the Control Panel window select Hardware and Sound



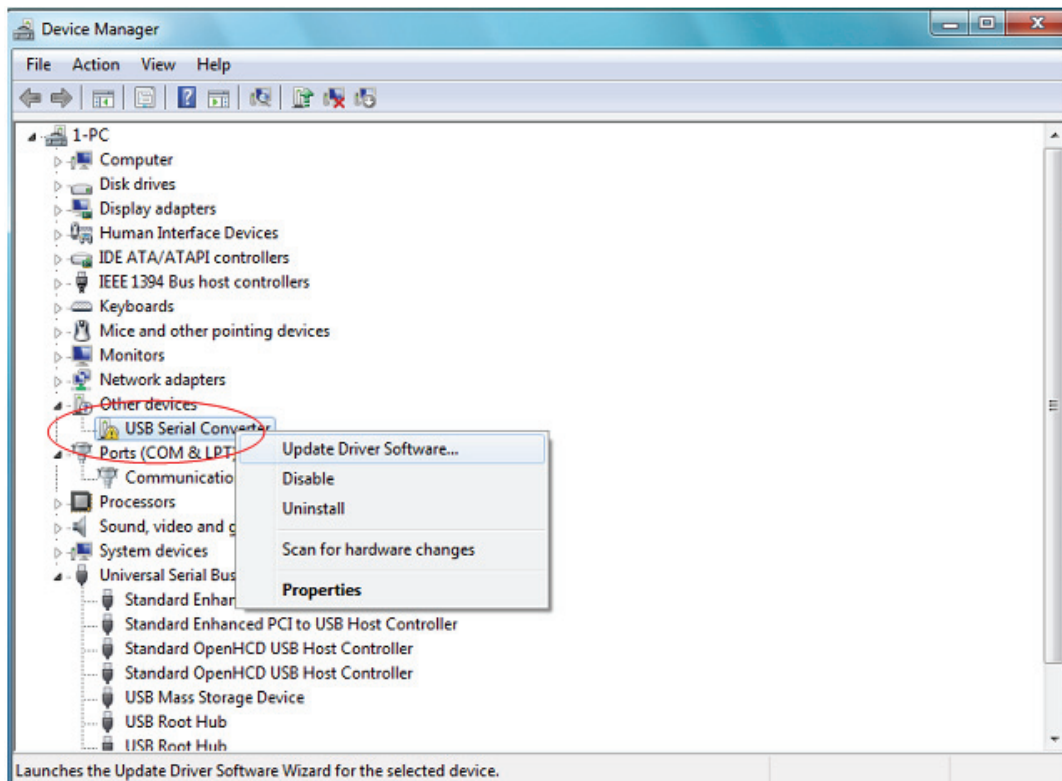
Step 4: At the next screen select Device Manager:



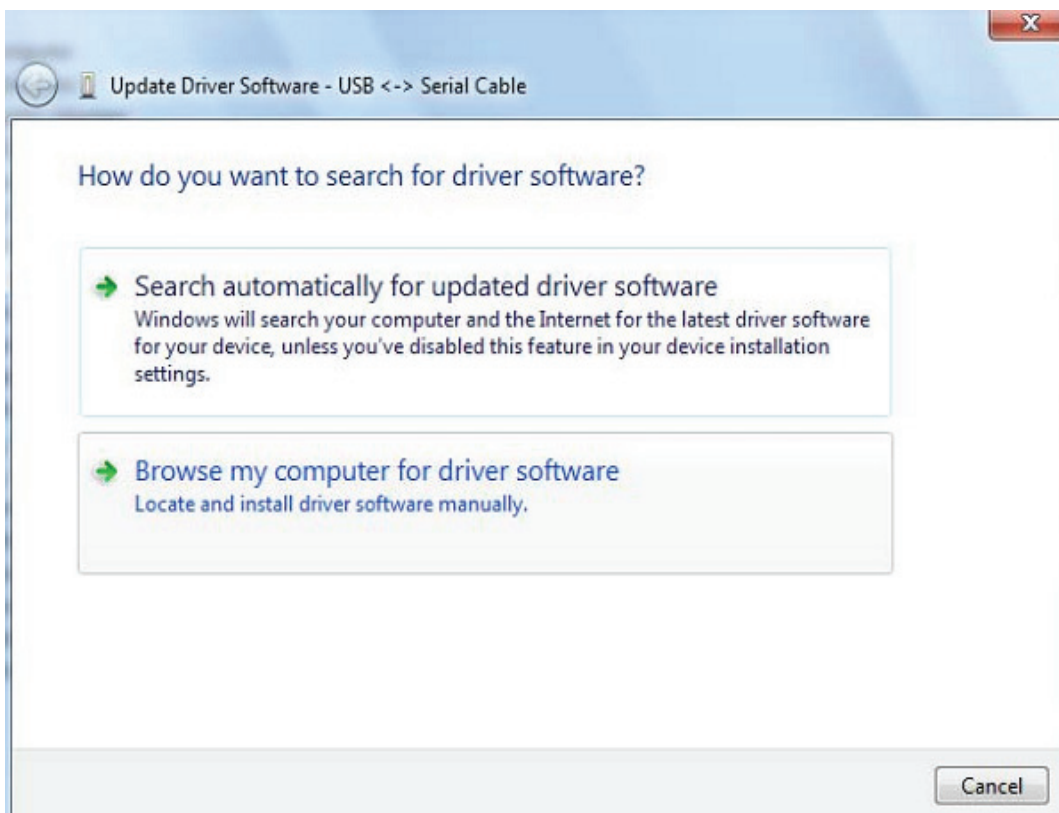
Step 5: In the Device Manager window there will be a device under Other Devices with a yellow warning symbol to indicate a problem ie no driver installed. The text next to this device will depend on the device attached. In this example the devices was “USB Serial Cable” devices.



Step 6: Right click on the other device to bring up a menu as shown below. From the displayed menu select “Update Driver Software...” This then displays the option for an automatic search or a manual search.



Step 7: Select the second option to browse manually.



Step 8: click “Browse” and choose the corresponding OS driver in CD. Click “Next” to continue

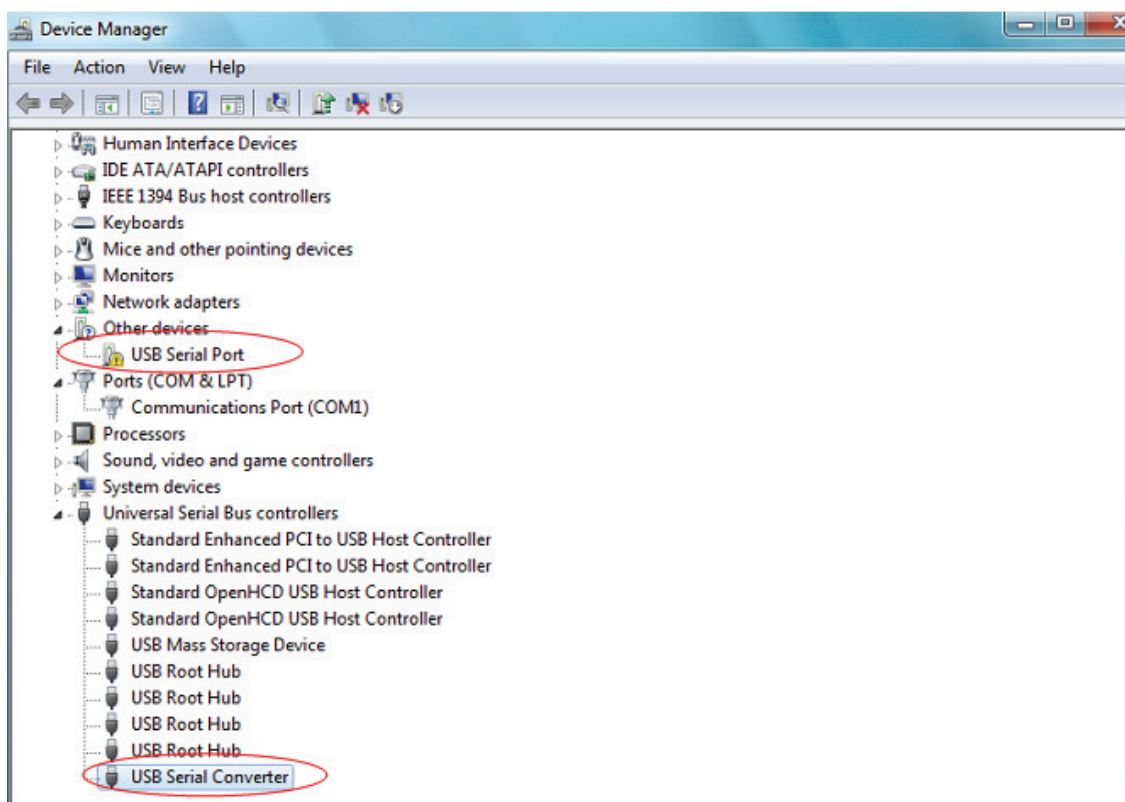
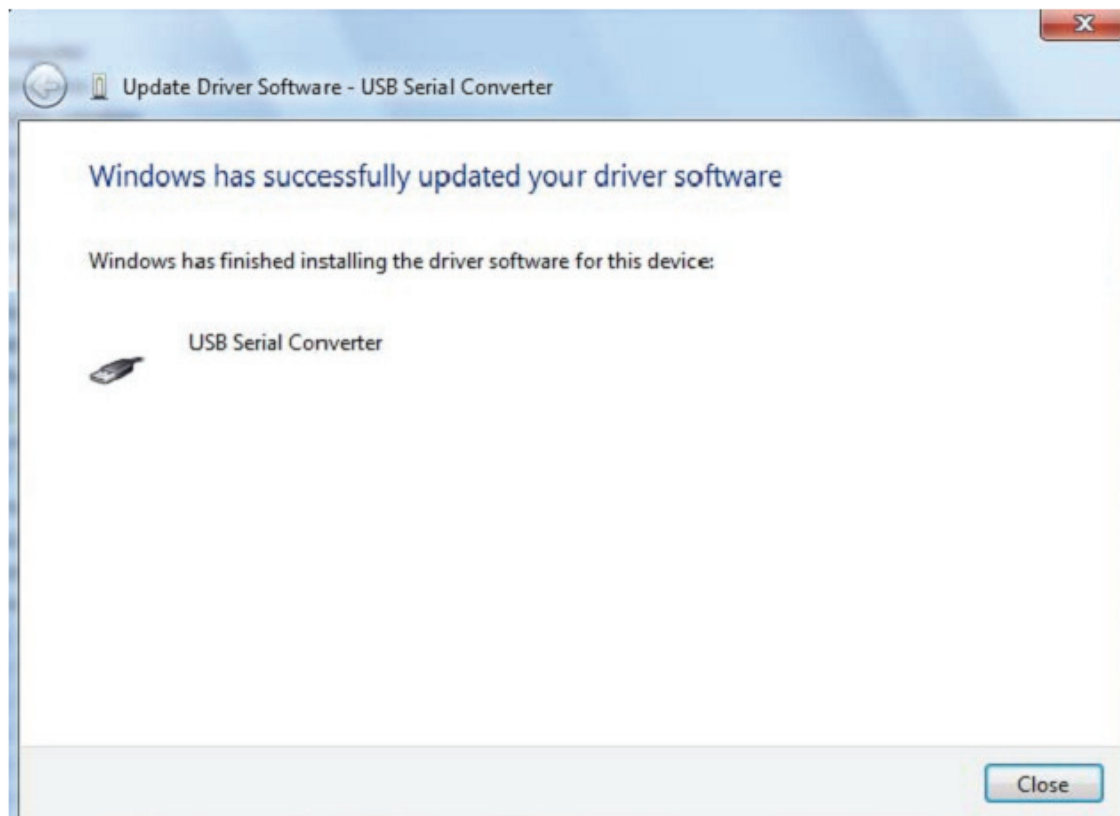


Step 9: When the installation has finished a completion screen is displayed.

Installing driver software...



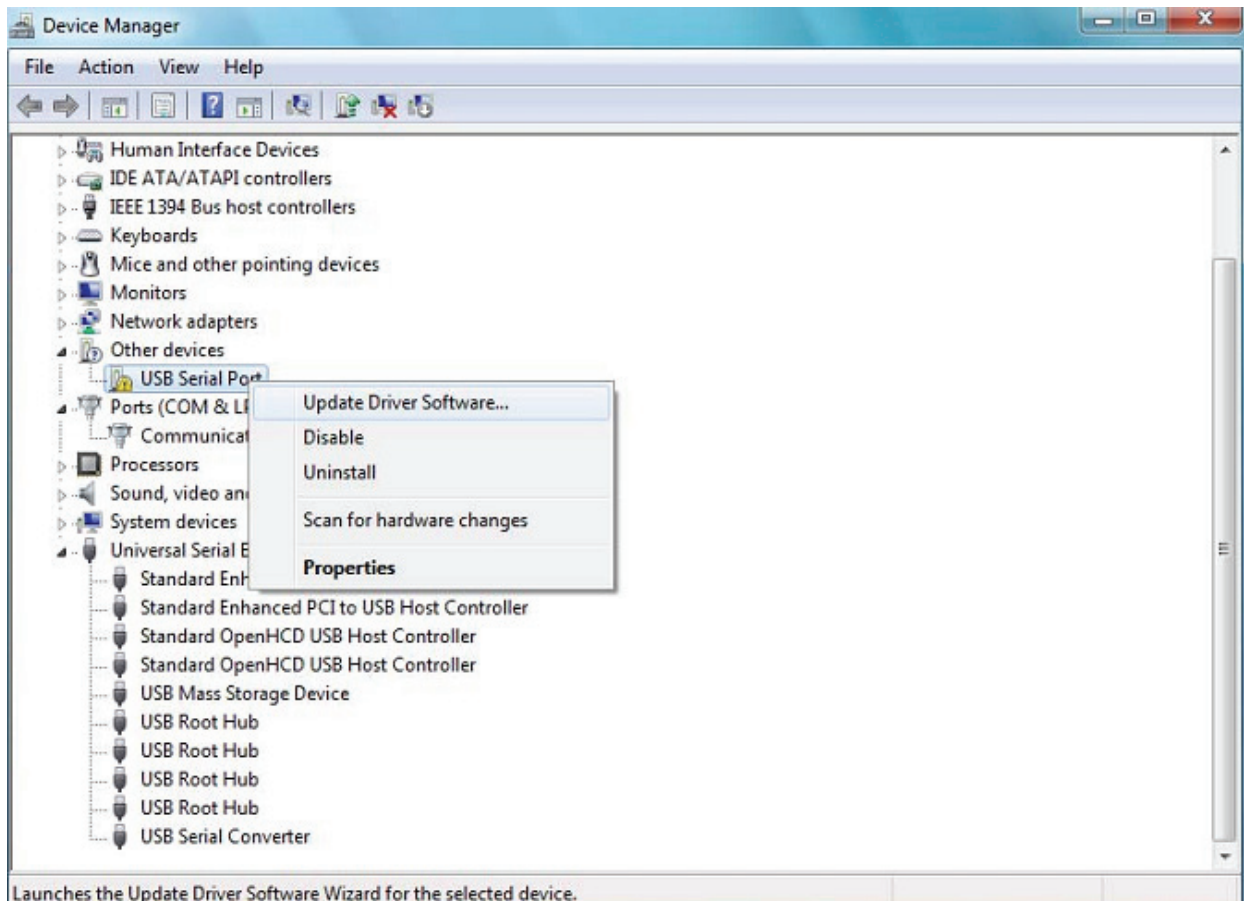
Step 10: Press Close to close this window and go back to the Device Manager Window.



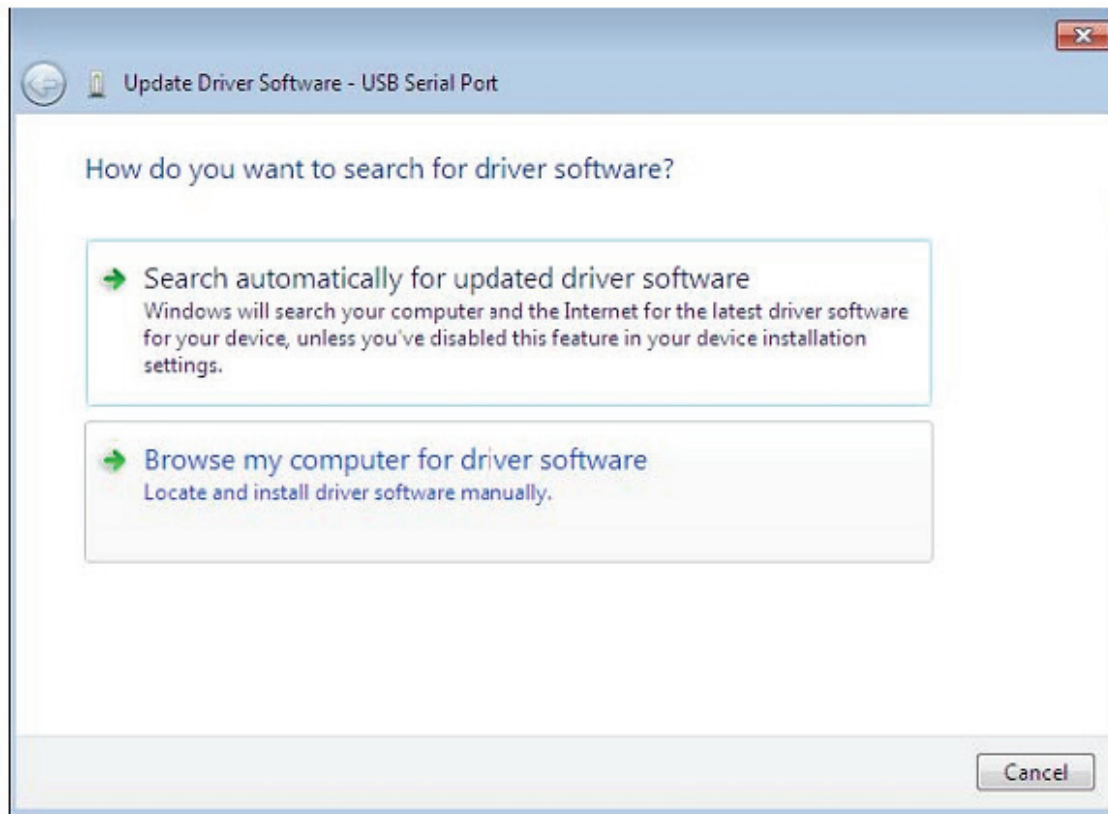


The Device Manager will still show a device under Other Devices but in addition to this there is a new entry under Universal Serial Bus Controllers indicated in the screenshot above as the USB Serial Converter. This indicates the bus layer of the driver is installed. Installing the Virtual Com Port layer of the driver is almost a repeat of the last few steps.

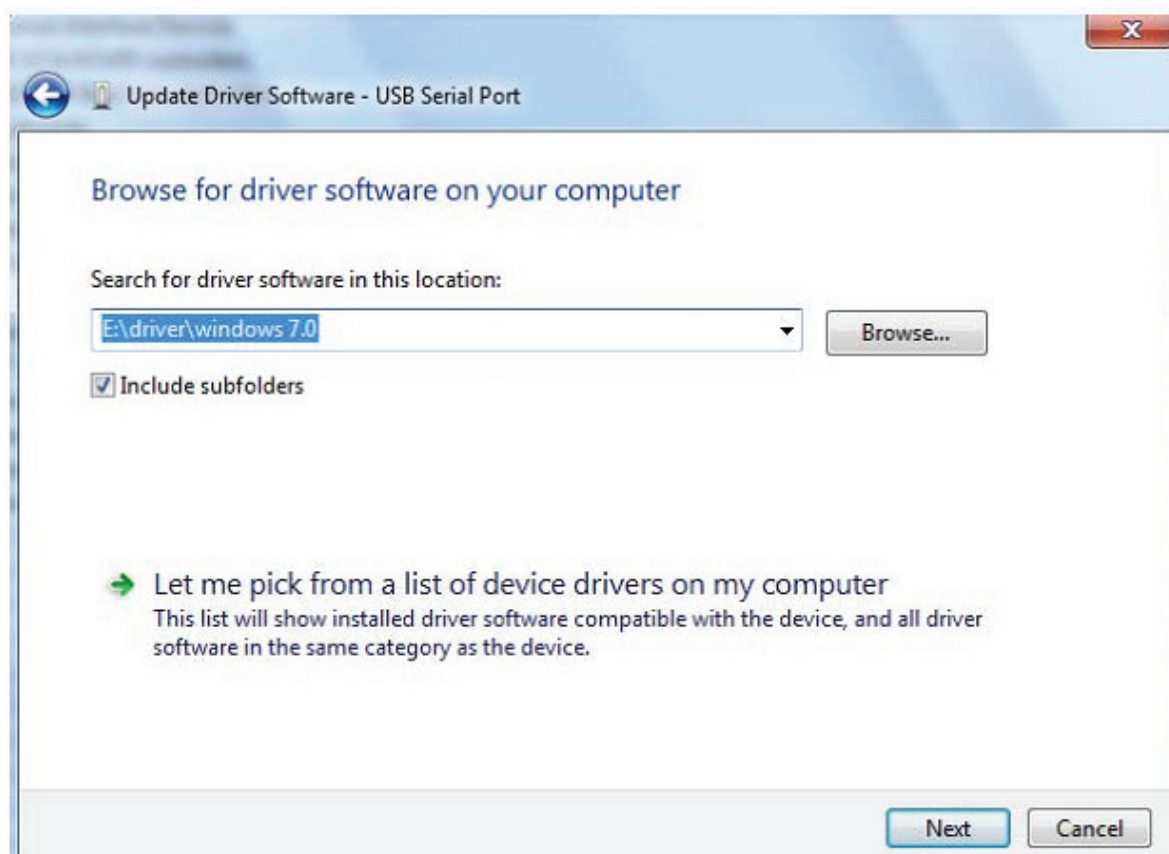
Step 11: Right click on the other device to bring up a menu as shown below. From the displayed menu select “Update Driver Software...” This then displays the option for an automatic search or a manual search.



Step 12: Select the second option to browse manually.

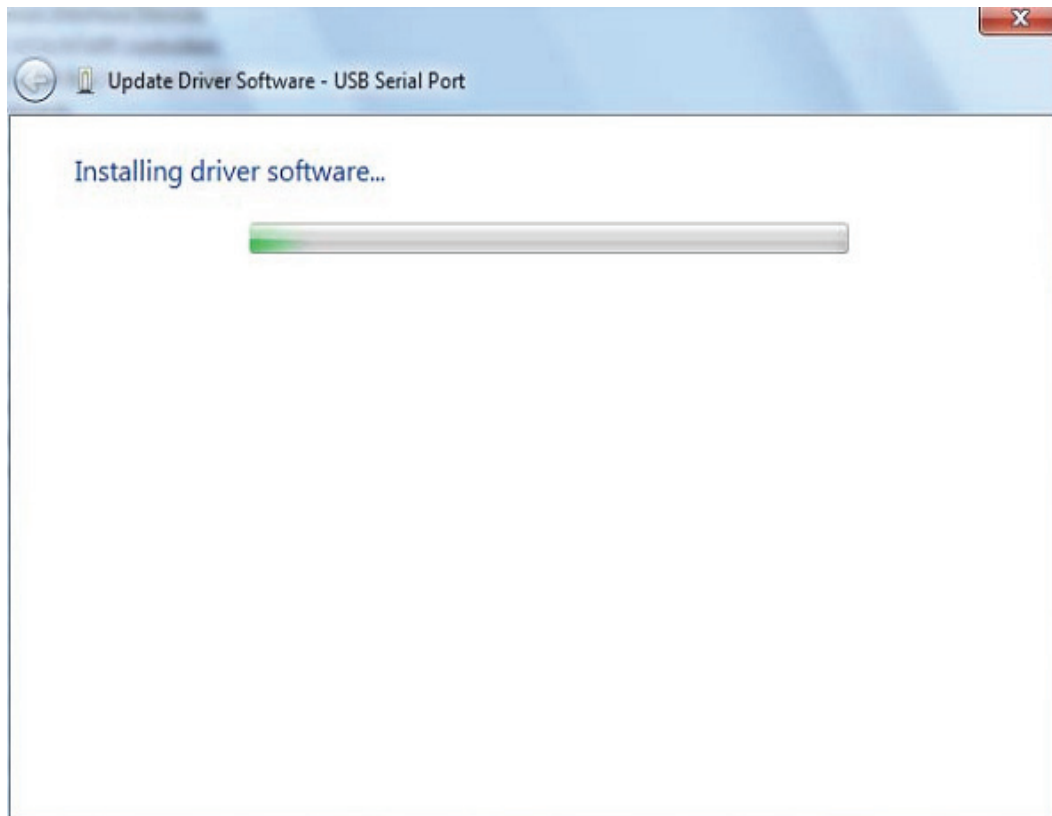


Step 13: click "Browse" and choose the corresponding OS driver in CD. Click "Next" to continue

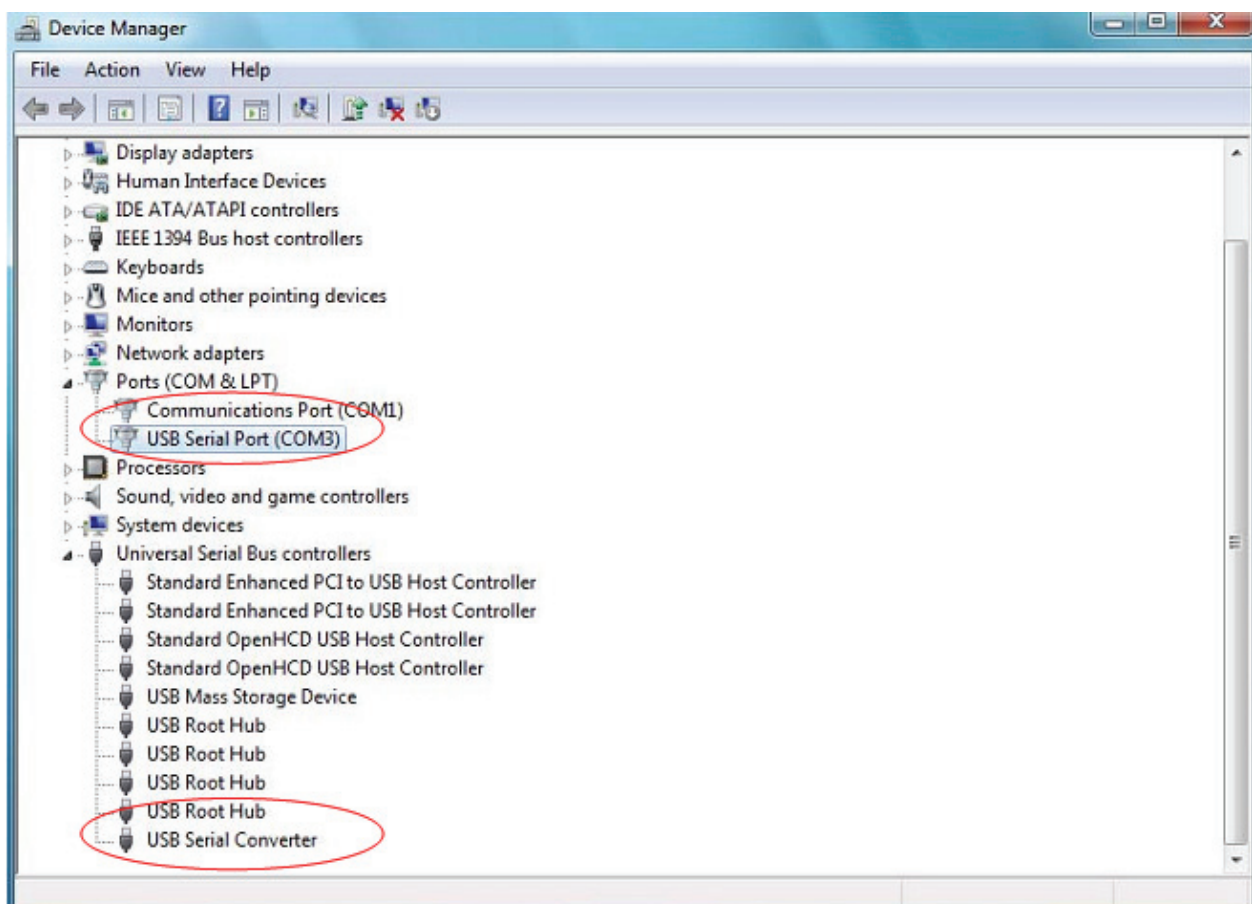
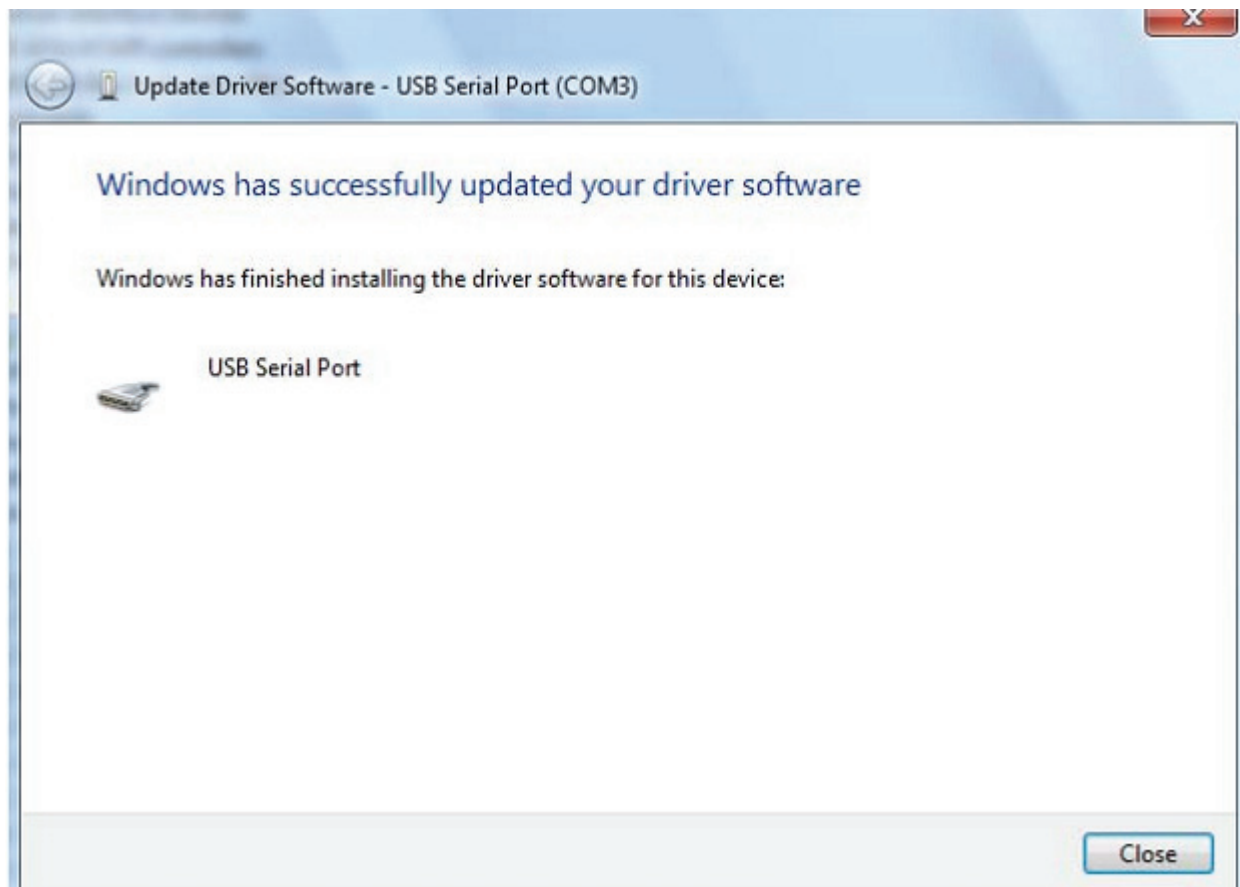




Step 14: When the installation has finished a completion screen is displayed.



Step 15: Press Close to close this window and go back to the Device Manager Window.

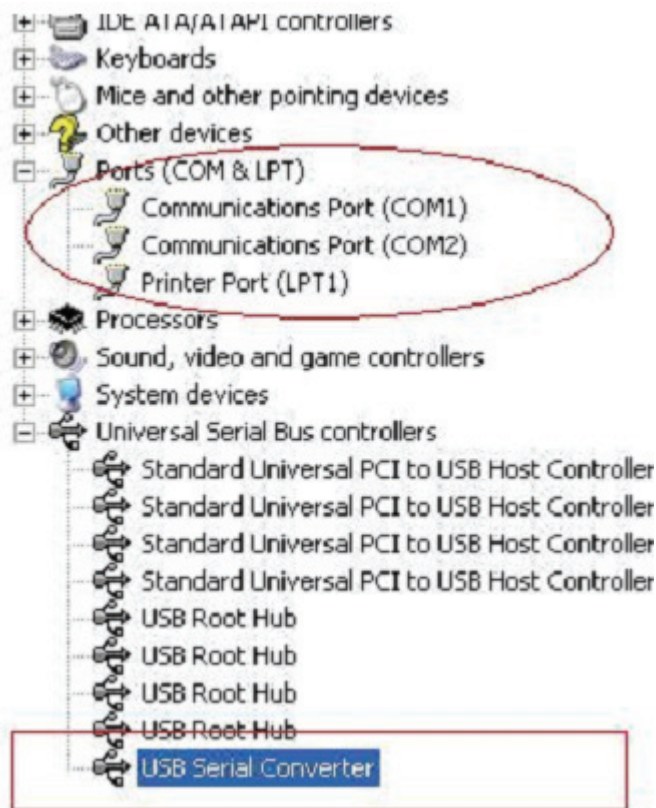


This time the Device Manager does not have a USB <->Serial Cable entry under Other Devices but does show entries under Universal Serial Bus Controllers and Ports (COM & LPT). The above screen shot displays a correct installation. The device is now ready to use on COM3.

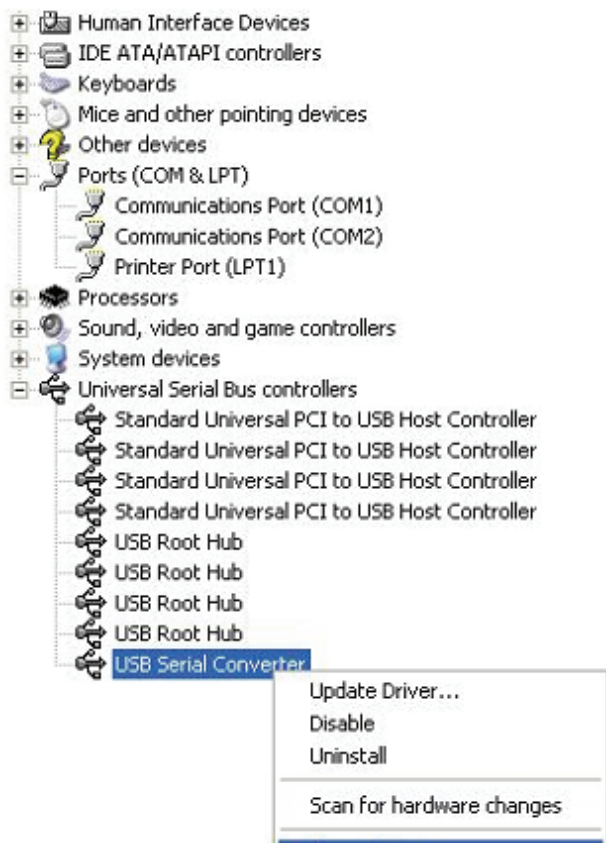
NOTE: Not all devices will install to COM3. The COM port allocation is determined by the installation wizard on the basis of the next free com port as designated in the PC registry.

**Remarks:**

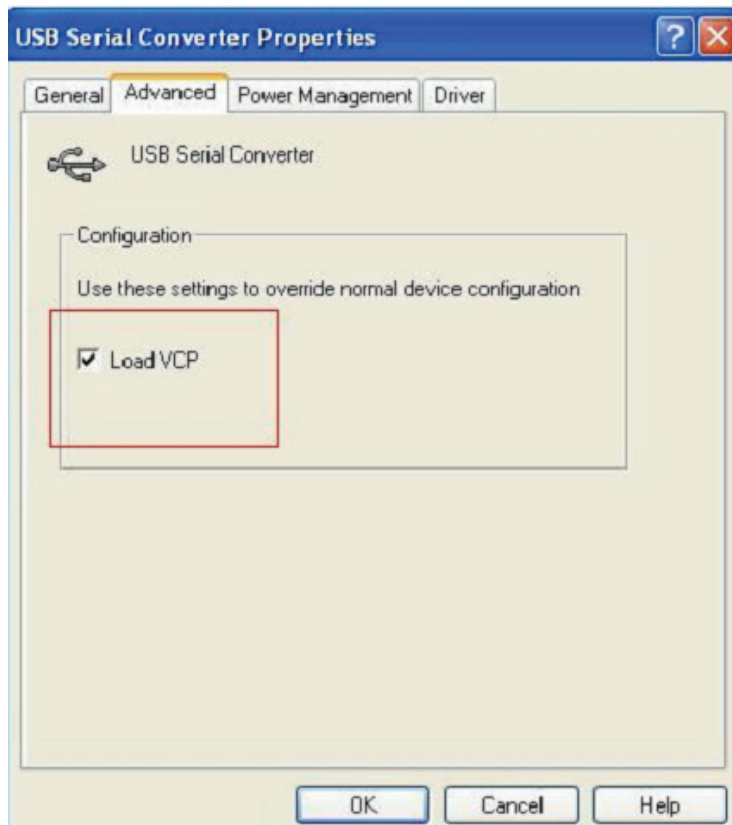
After installation if you can see “USB Serial Converter” from the “Device Manager”, but can’t see “USB Serial Port (COM3)” , please continue next steps.

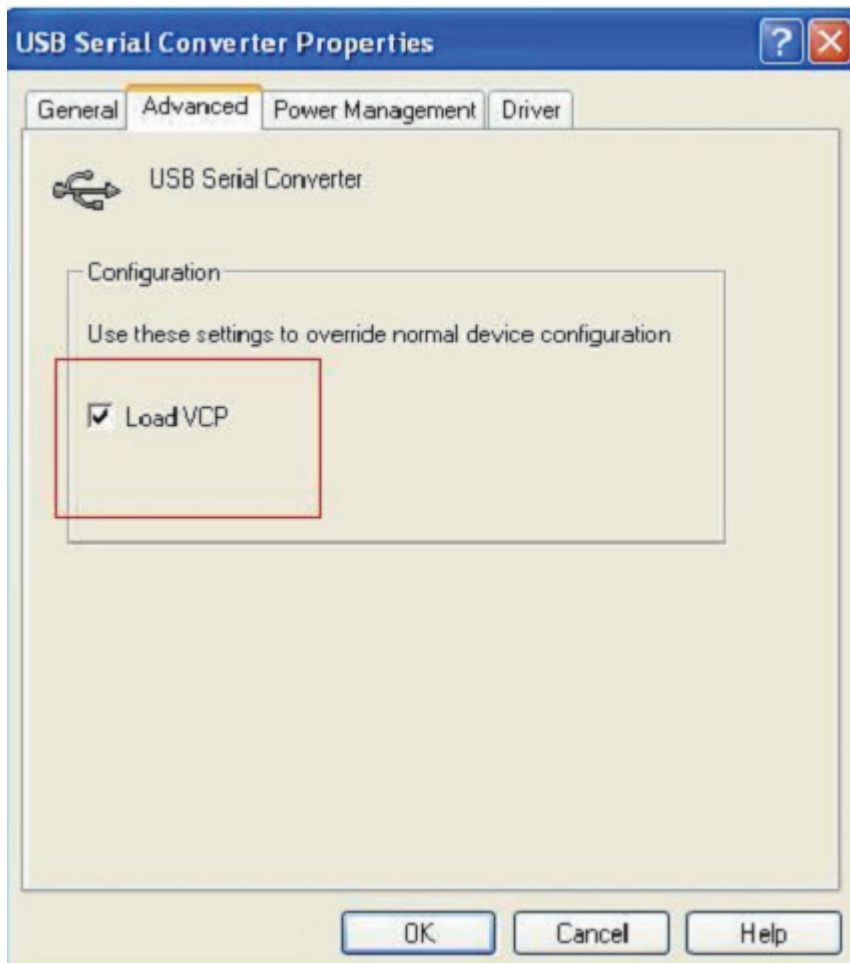


Step A: Right click “USB Serial Converter”, then click “Properties”.



Step B: Select “Load VCP” in the “Advanced”, click “OK”





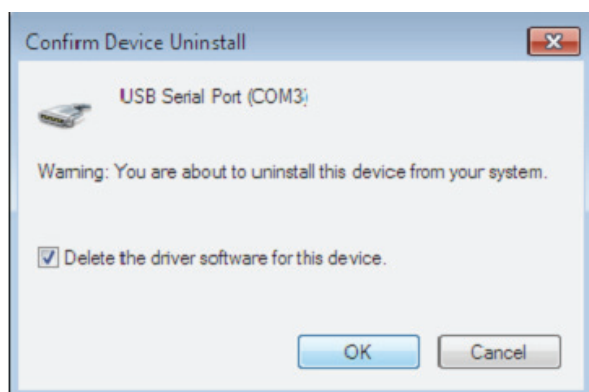
Step C: Move out USB 2.0 TO RS232 on your computer. Connect the device to an old USB port on your PC again, now it's ok , please refer to the following chart:



## Uninstalling FTDI Devices

With the release of Microsoft Windows 7, the FTDI uninstaller has been rendered unusable due to Windows Resource Protection preventing the executable from deleting driver files and associated registry values. Windows 7 will only allow the system itself to modify files and registry values in these locations.

Devices can be removed using the Device Manager by simply right-clicking on the mouse and selecting "Uninstall". This will delete the associated registry entries for that device only. Windows 7 provides an automatic method to delete driver files via a check box to "Delete the driver software for this device" on the uninstall dialog box.

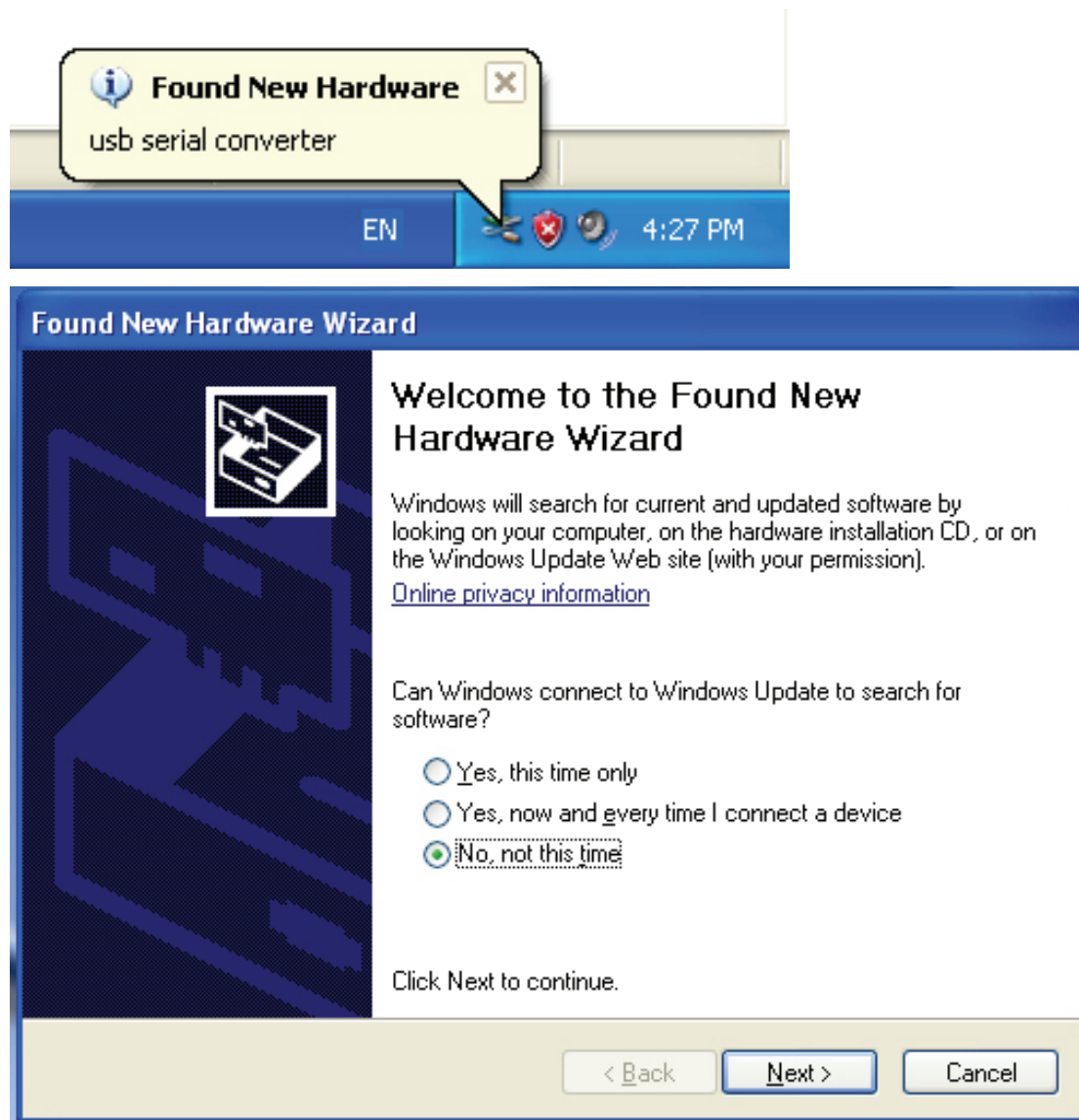




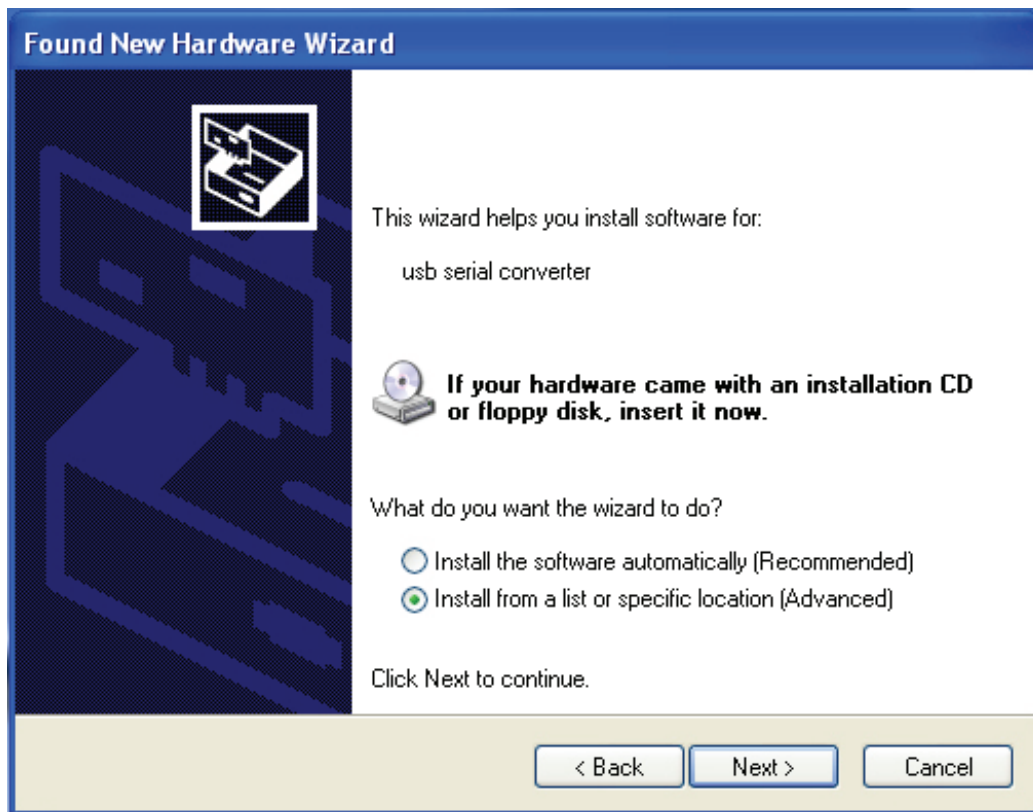
# Windows XP Installation Guide

Step 1: Insert CD Driver of this product to the CD-ROM

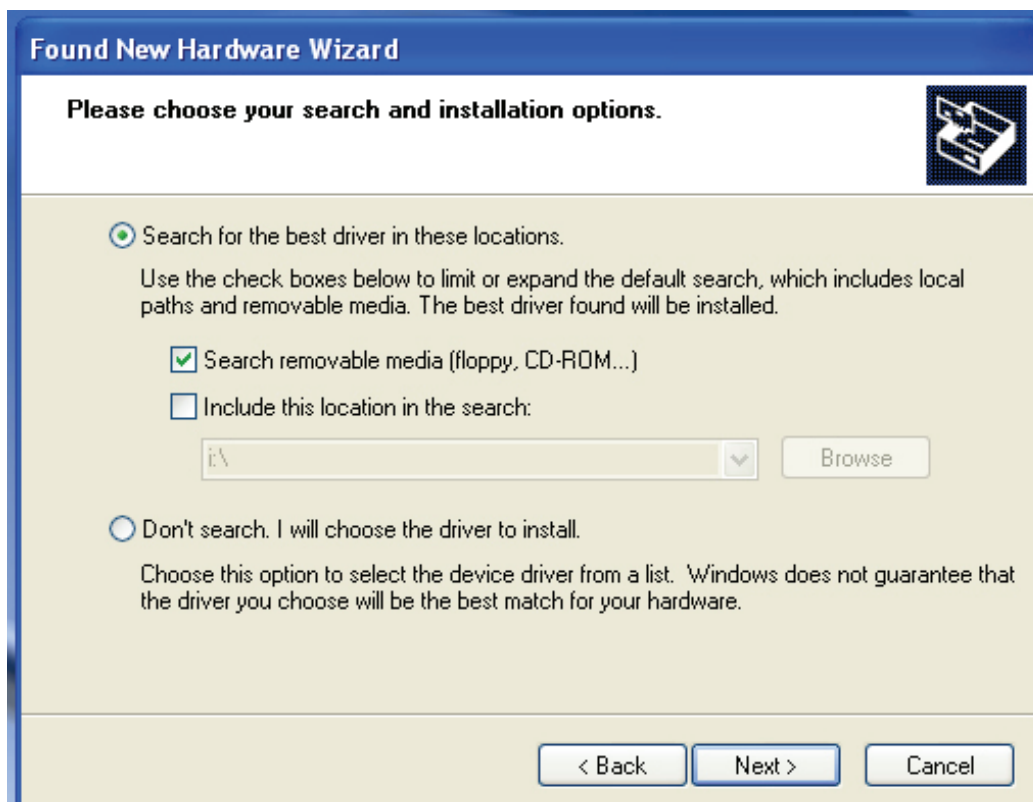
Step 2: Connect the device to a free USB port on your PC, and find new hardware wizard, please refer to the following chart:



Step 3: Select “No, not this time“, click “Next” to continue.



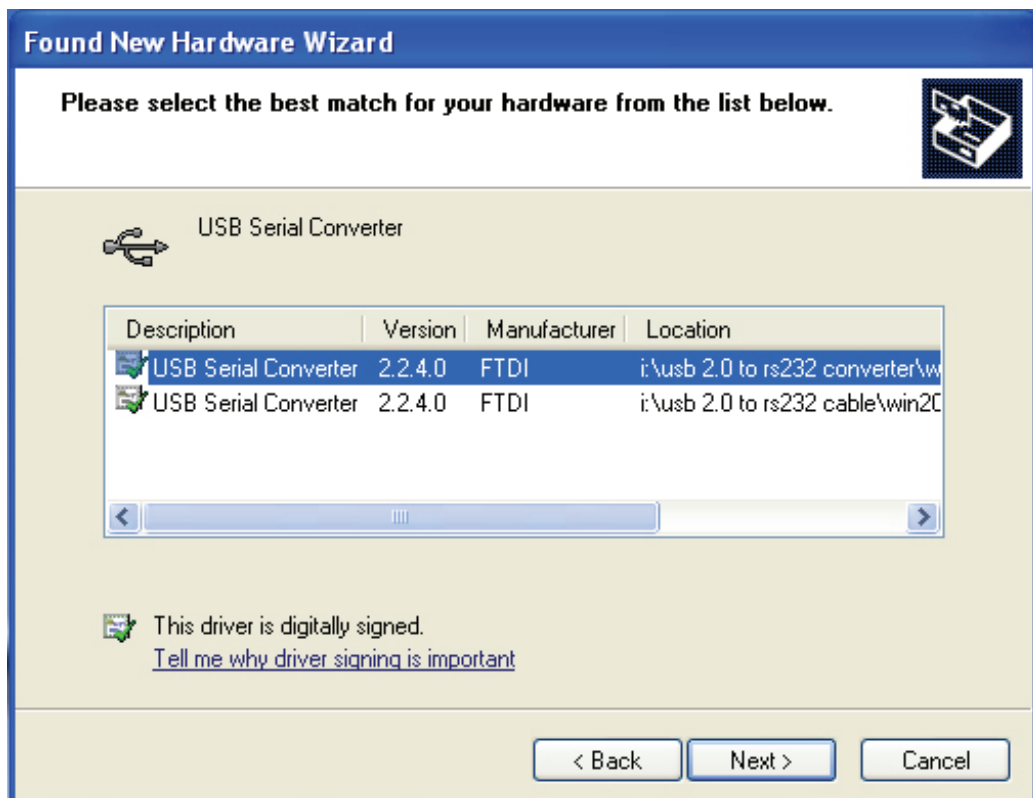
Step 4: Select “Install from a list or specific location (Advanced)”, click “Next” to continue.



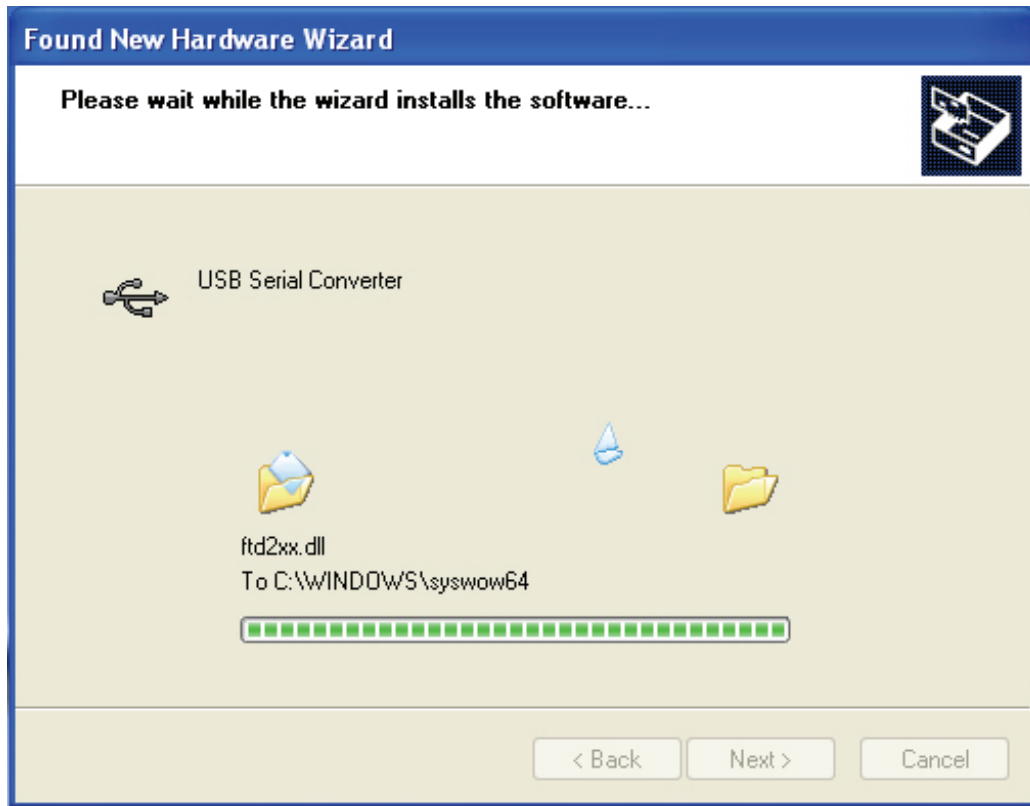
Step 5: Select “Search removable media (floppy, CD-ROM...)”, click “Next” to continue.



Step 6: Auto search for the corresponding driver in the CD.



Step 7: You will find two types of hardware wizard, one is for USB 2.0 - RS232 Converter, another one is for USB 2.0 TO RS232 cable. Please choose the corresponding driver according to your product, click "Next" to continue.



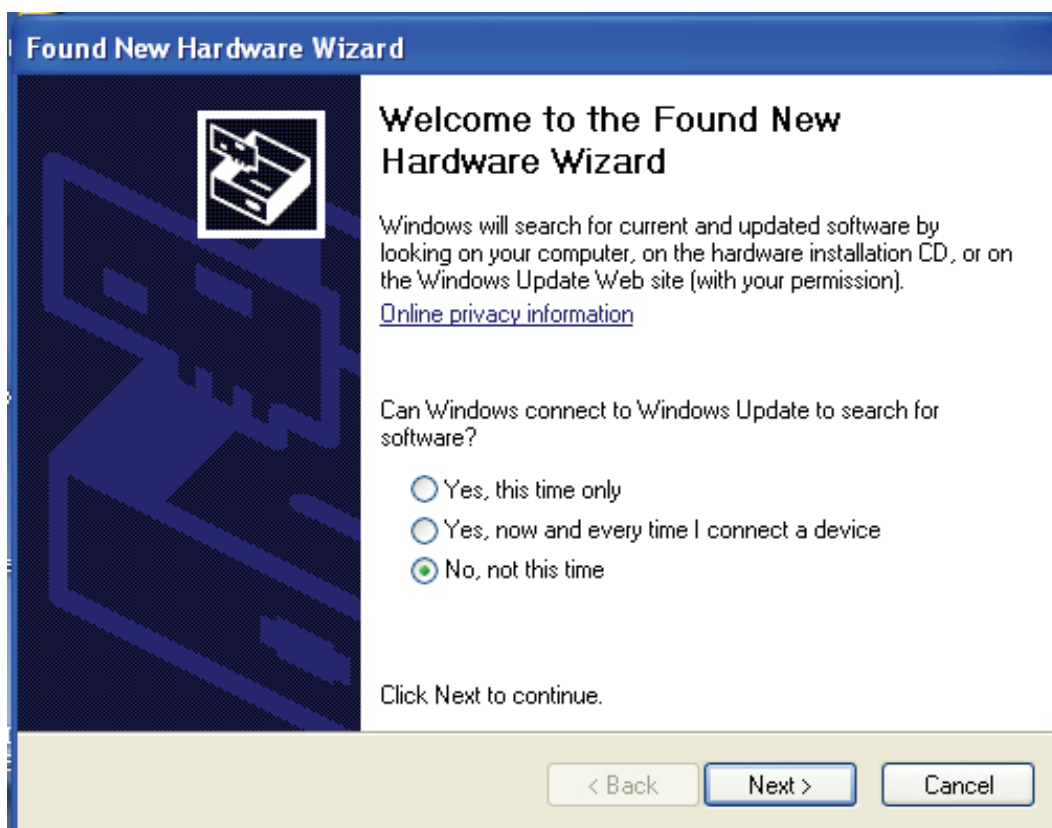
Step 8: The wizard has started installation and copy file to your system



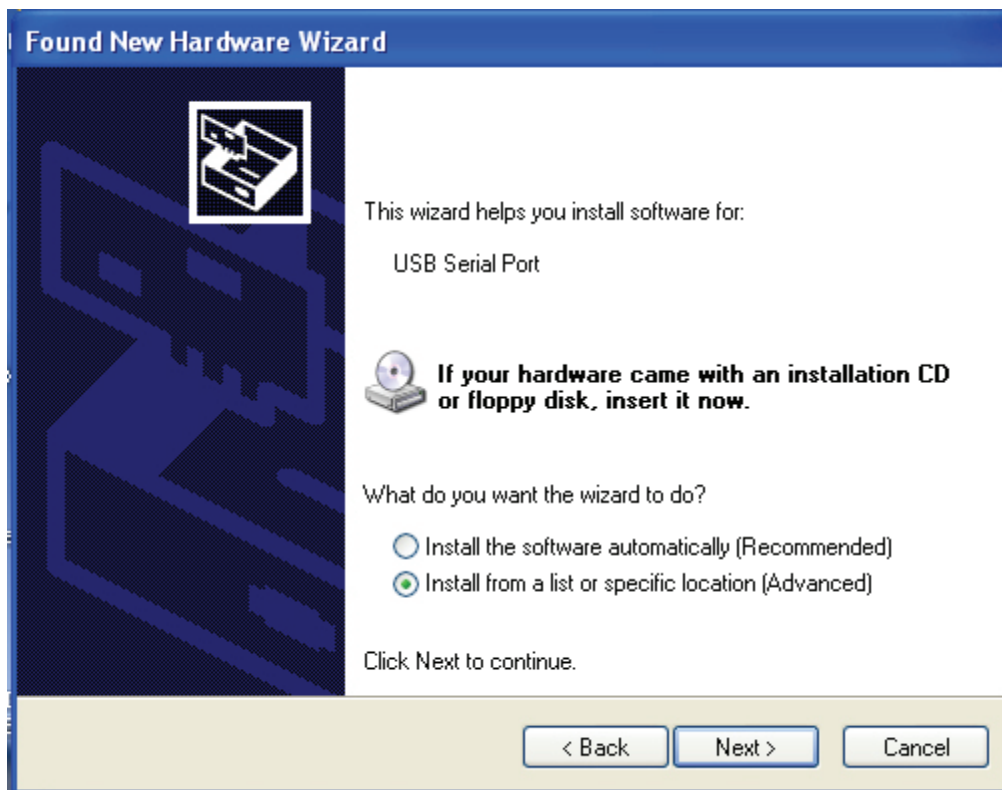
Step 9: Click “Finish” to close the wizard.



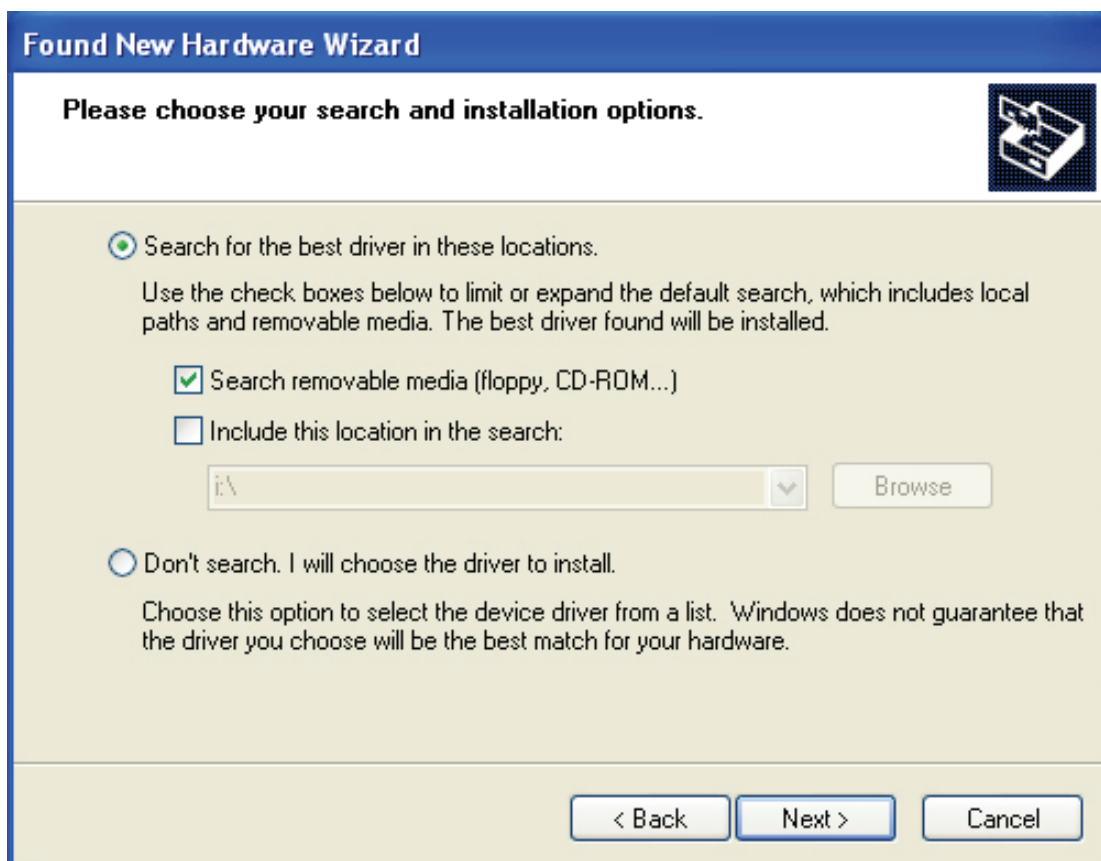
Step 10: Find new com port.



Step 11: Select “No, not this time“, click “Next” to continue.

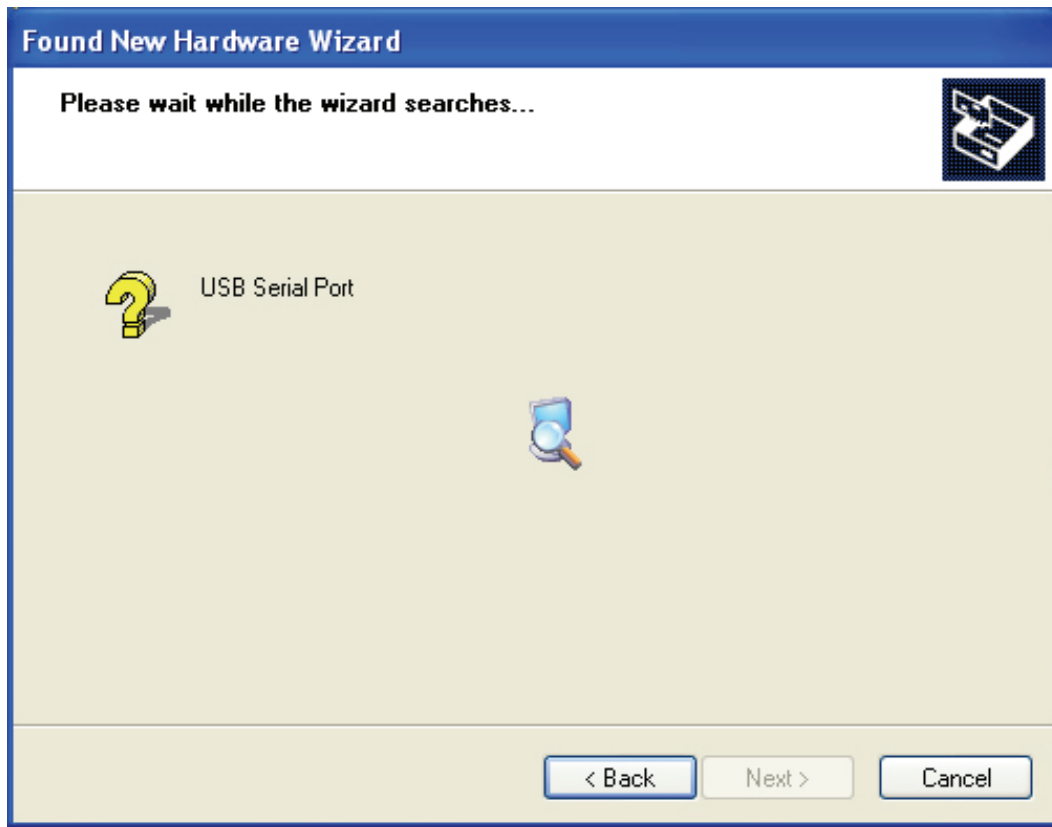


Step 12: Select “Install from a list or specific location (Advanced)”, click “Next” to continue.

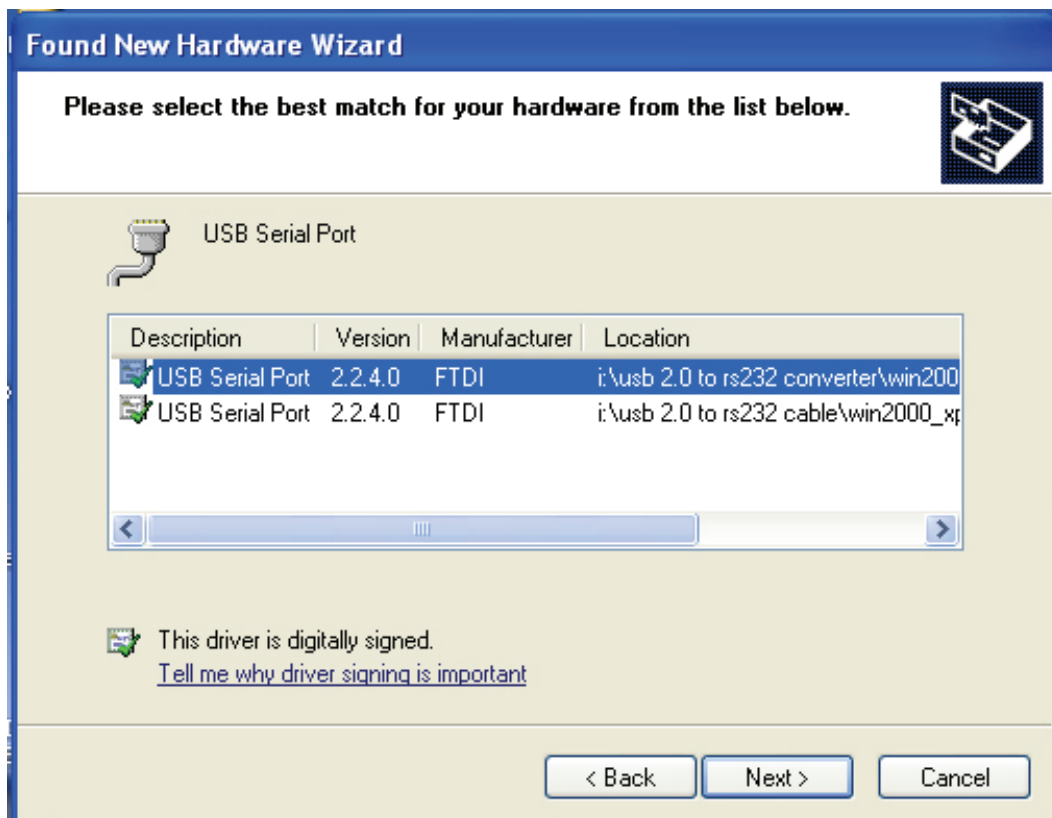




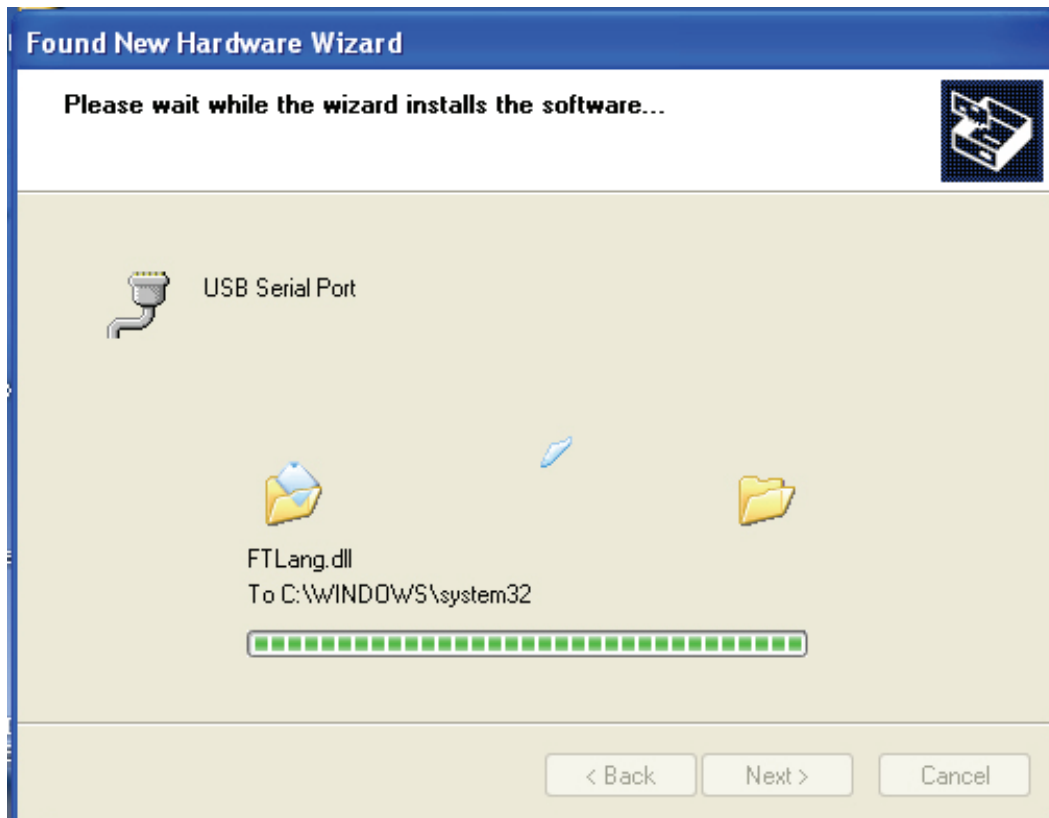
Step 13: Select “Search removable media (floppy,CD-ROM...)”,click “Next” to continue.



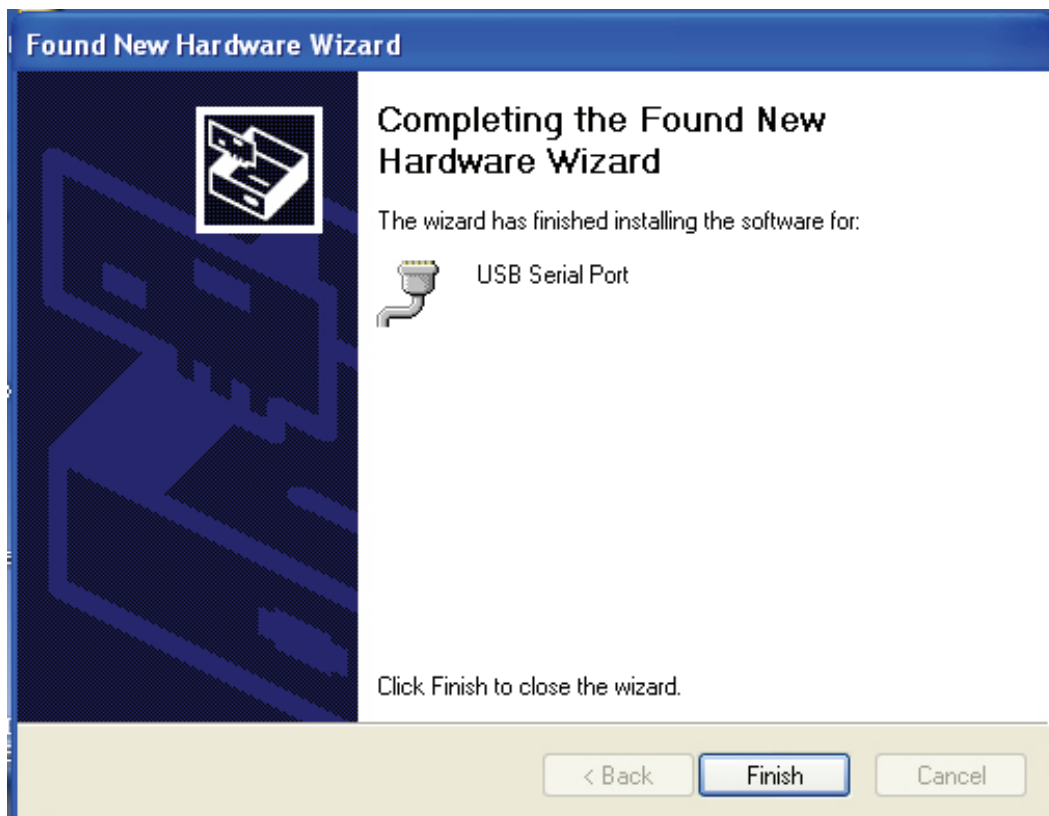
Step 14: Auto search for the corresponding driver in the CD.



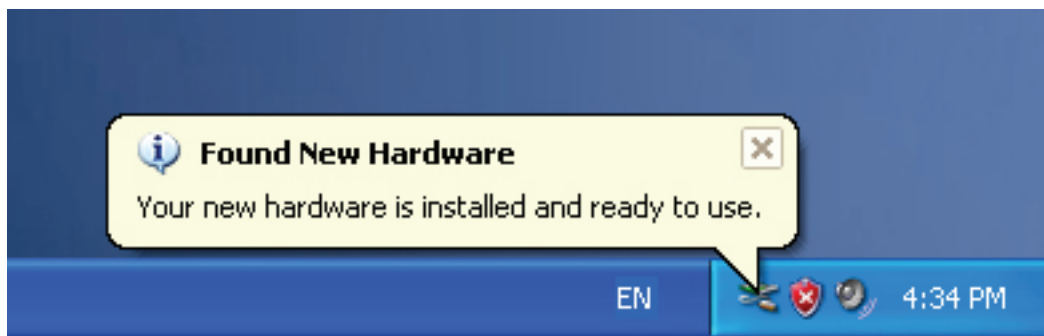
Step 15: Choose one type of the driver for your product, click “Next” to continue.



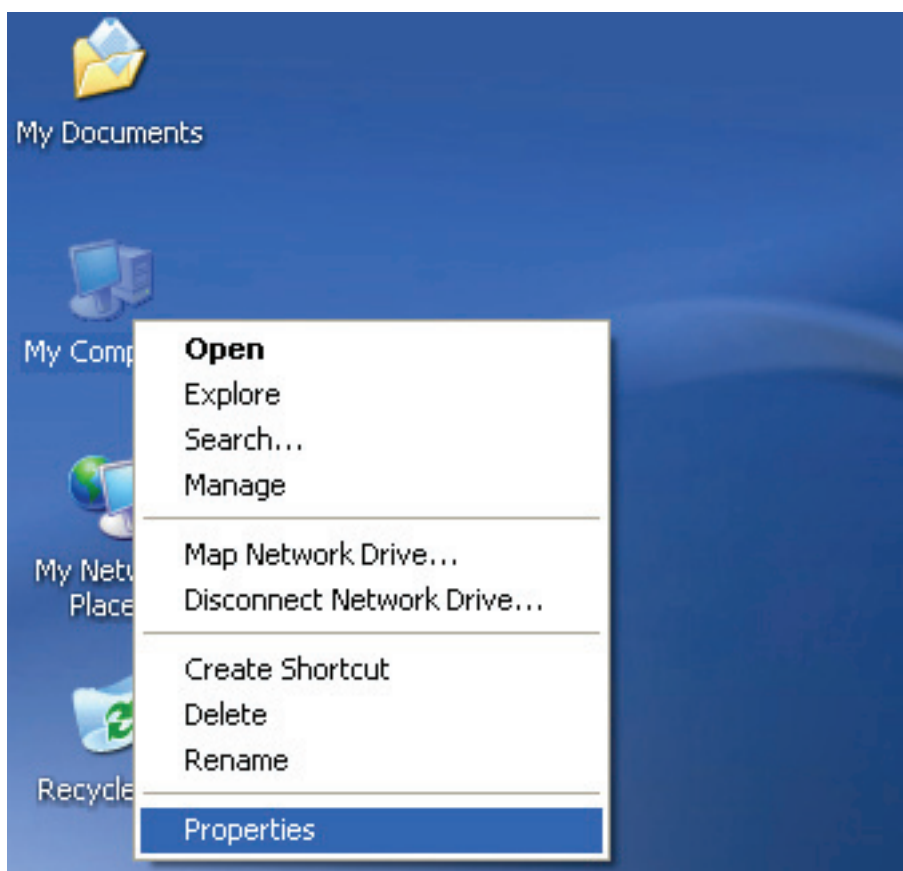
Step 16: The wizard has started installation and copy file to your system .



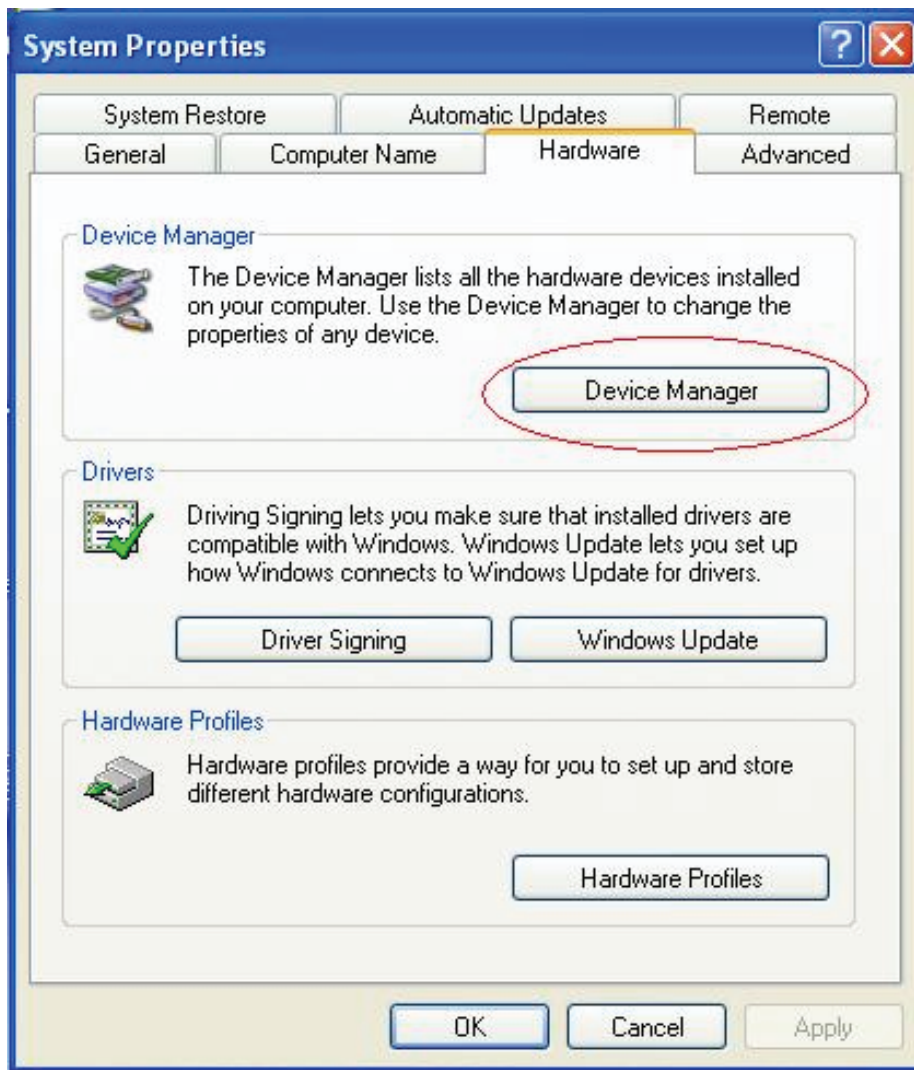
Step 17: Installation completed, click “Finish” to close the wizard.



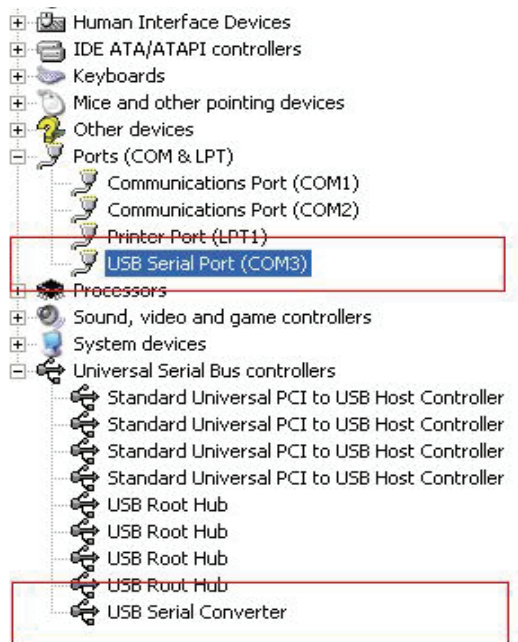
Step 18: Your new hardware is installed and ready to use.



Step 19: If you want to see it, right click “my computer”, and then click “Properties”.



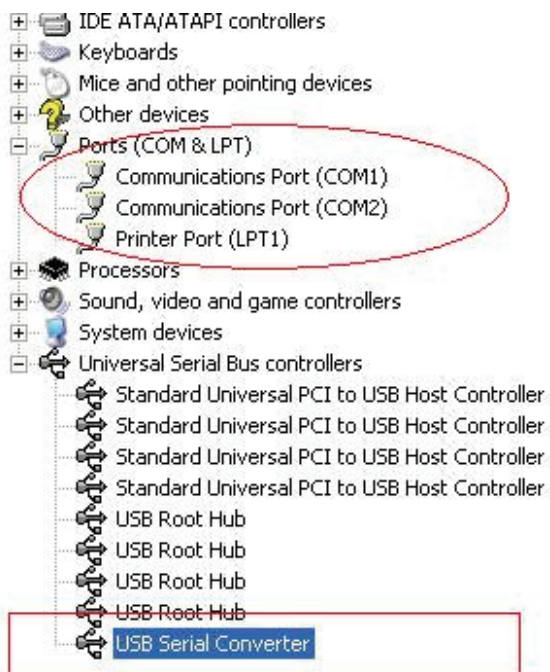
Step 20: Select “Device Manager” in the “Hardware” of the interface “System Properties”, click it, you can see the hardware devices installed on your computer, please refer to the following chart:

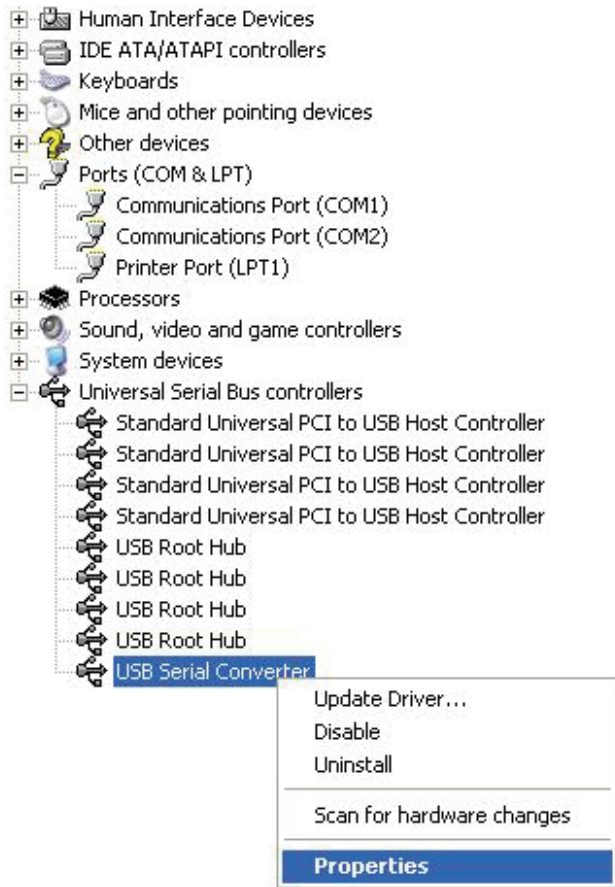


Step 21: Installation finished.

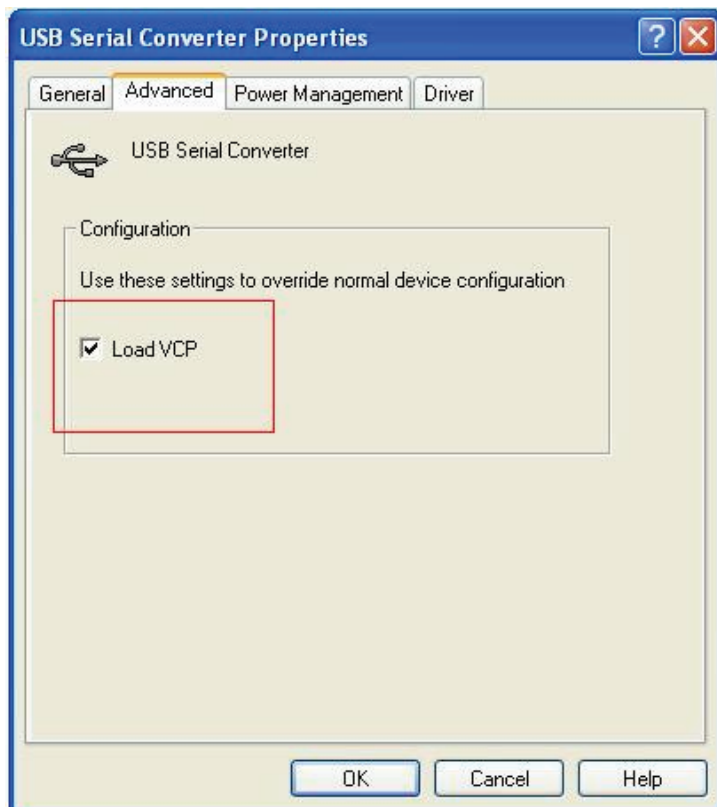
### Remarks:

After installation, if you can see “USB Serial Converter” from the “Device Manager”, but can’t see “USB Serial Port (COM3)”, please continue next steps.





Step A: Right click “USB Serial Converter”, and then click “Properties”.





Step B: Select “Load VCP” in the “Advanced”, click “OK”.

Step C: Move out the USB - RS232 converter on your computer. Connect the device to an old USB port on your PC again, now it is ok, please refers to the following chart:



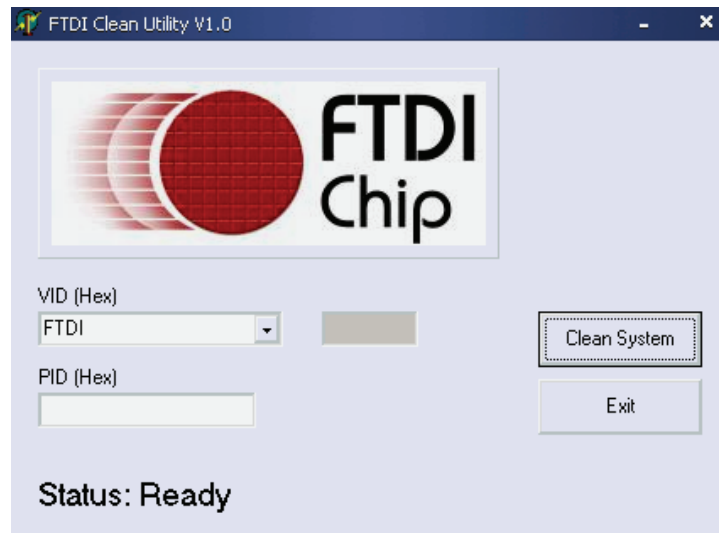
***Congratulations, installation is successful.***

## Remove Driver

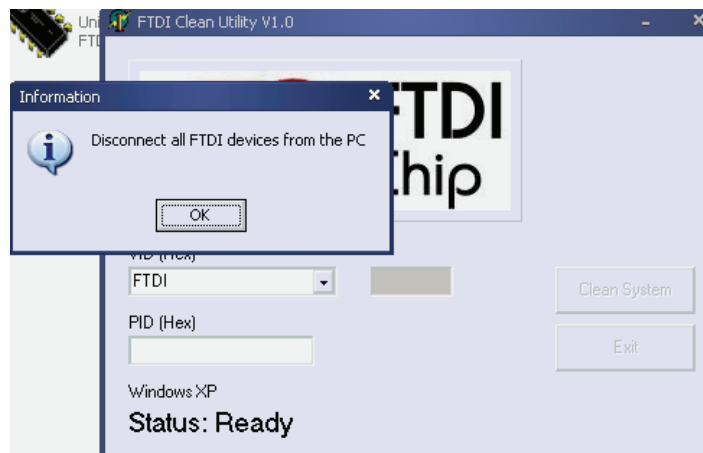
1, Open the drivers of this product, please refer to the below chart :



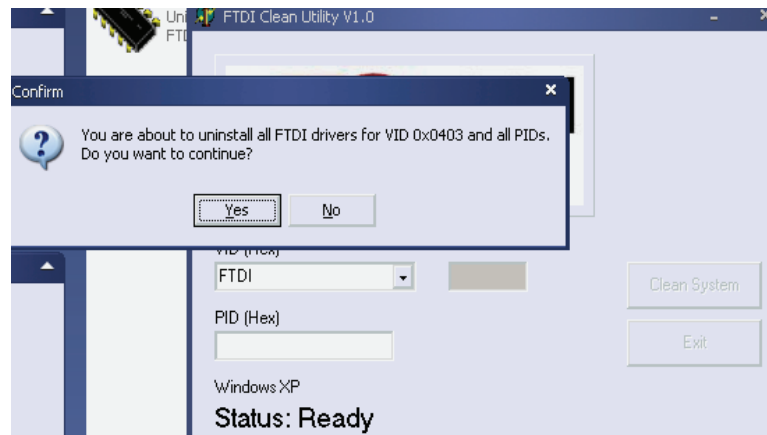
2, Double click “FTClen.exe”, it appears the following interface



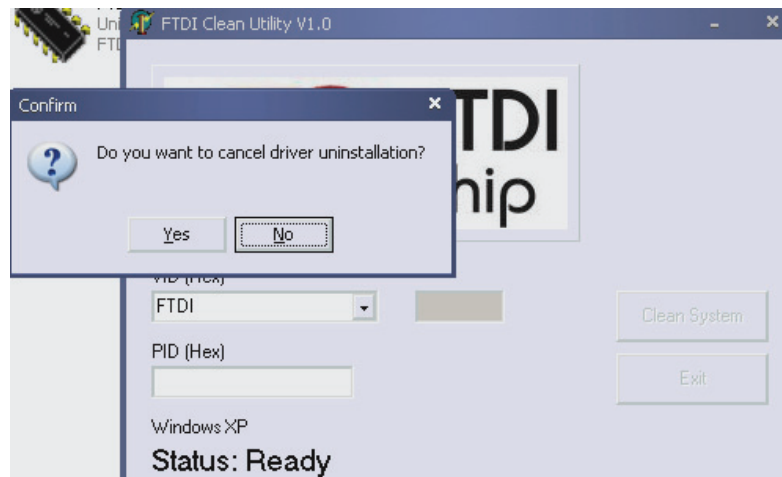
3, click “Clean System”, it appears the following interface :



4, Disconnect USB 2.0 To rs232 device from the pc , click “ok” it appears the following interface, then click „Yes”



5, please click “No” to uninstall driver



6, When Uninstall is completed, please click “Exit” to terminate the uninstall application.



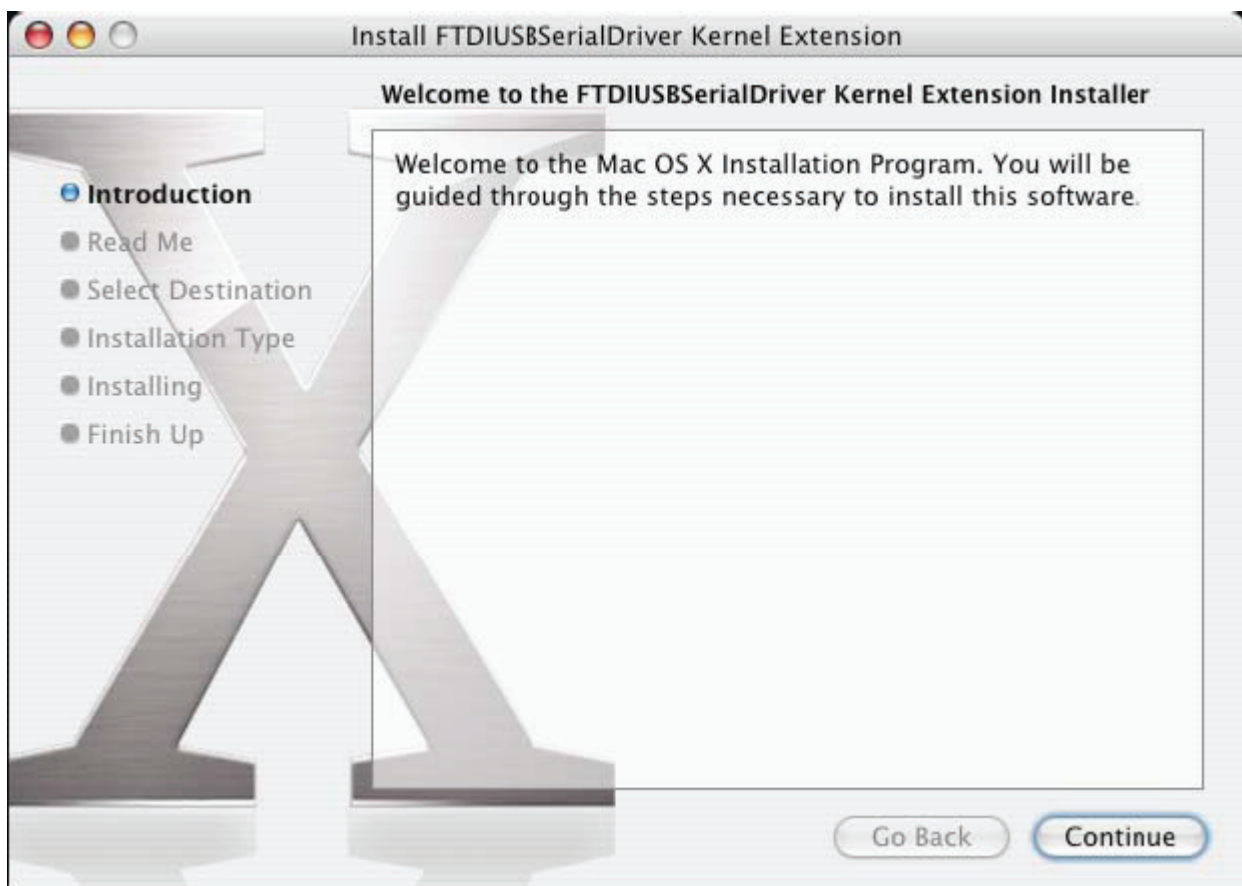
# Mac OS X Installation Guide

## 1 Welcome to the Mac OS X Installation Guide

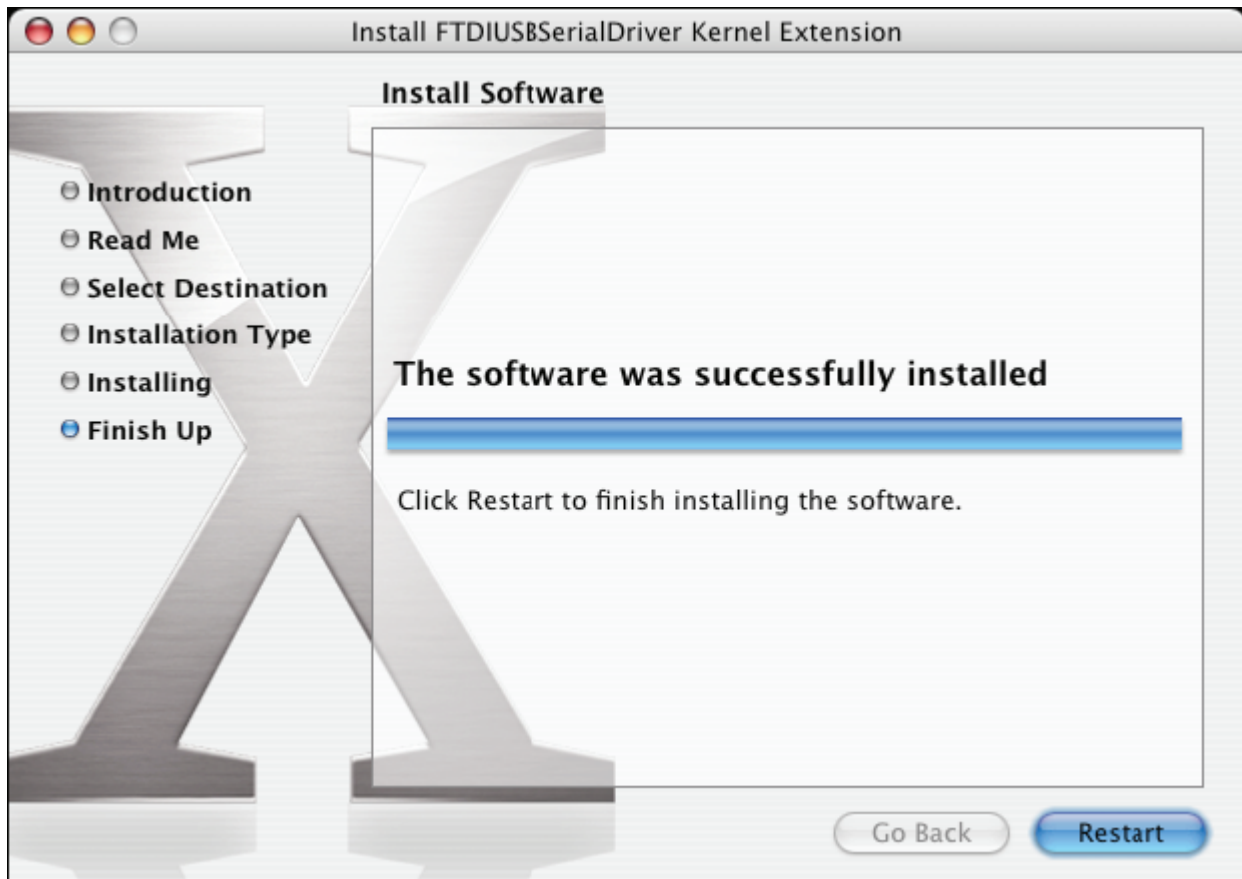
This document describes the procedure for installing the Mac OS X FTDIUSBSerial driver for FTDI's FT2232C, FT232BM, FT245BM, FT8U232AM and FT8U245AM devices. The driver is available for free download from the Drivers section of the FTDI web site.

## 2 Installing FTDIUSBSerialDriver

Download the driver from the Drivers section of the FTDI web site and save it to the hard disk. The driver is now available in disk image (.dmg) format. Run the installer by double clicking on the FTDIUSBSerialDriver.dmg icon.



Click Continue to proceed with the installation and follow the instructions on screen. When the installation is complete, reboot the computer.



When the computer has rebooted, plug in the device. If the device is installed properly, you will see entries in the `/dev` directory:

```
/dev/cu.usbserial-xxxxxxx
```

```
/dev/tty.usbserial-xxxxxxx
```

where `xxxxxxx` is either the device's serial number or, for unserialized devices, a location string that depends on which USB port your device is connected to. Note that for FT232C devices port A is denoted by the serial number appended with "A" and port B is designated by the serial number appended with "B". `/dev` can be accessed through the Terminal application. The Terminal application can be launched by selecting Go > Applications > Utilities > Terminal. Type the following lines in the Terminal window to produce the file list:

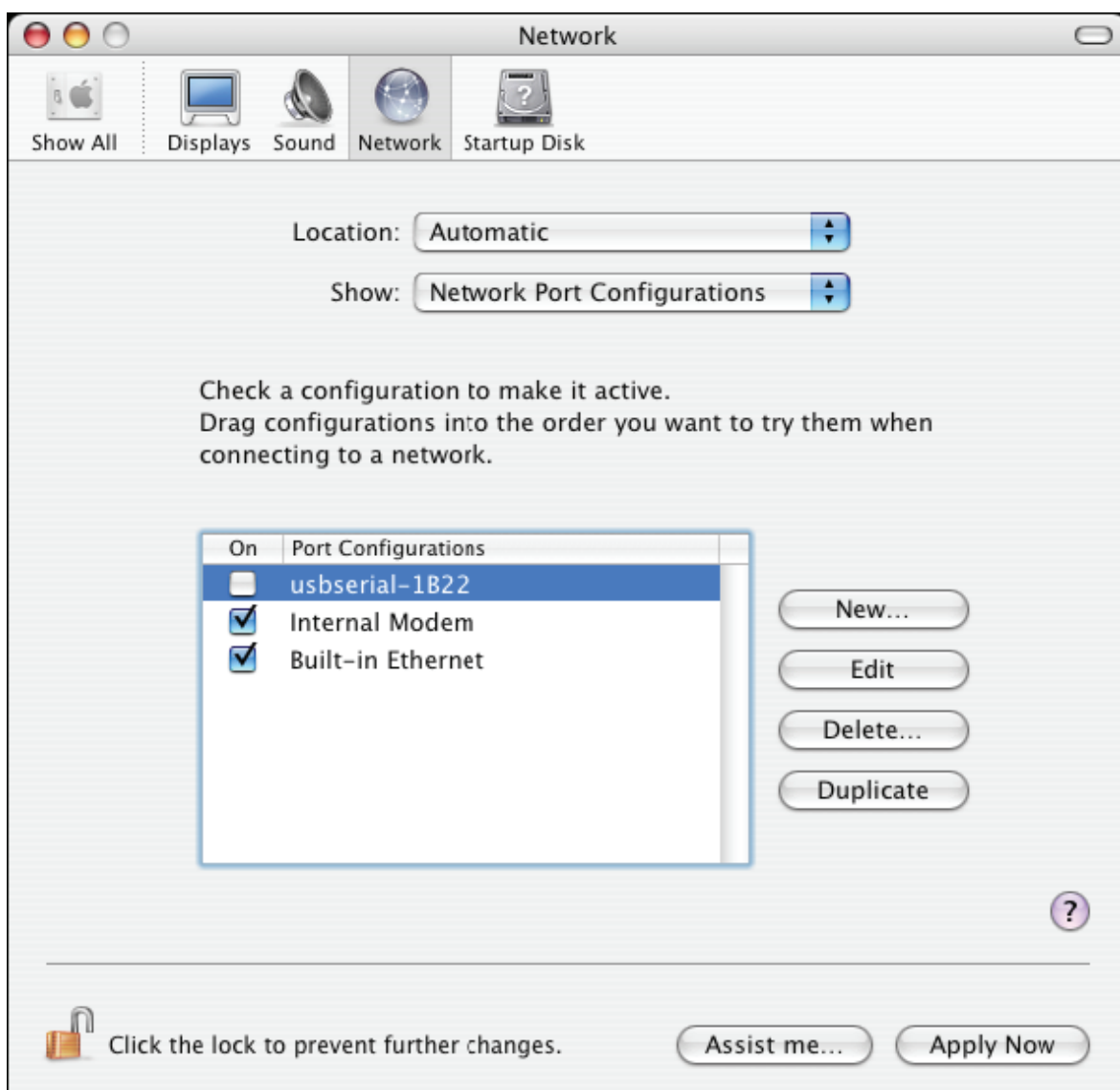
```
cd /dev
```

```
ls-l
```

If you run the application System Preferences and select Network (Go > Applications > System Preferences > Network), you should see the text "New Port Detected".

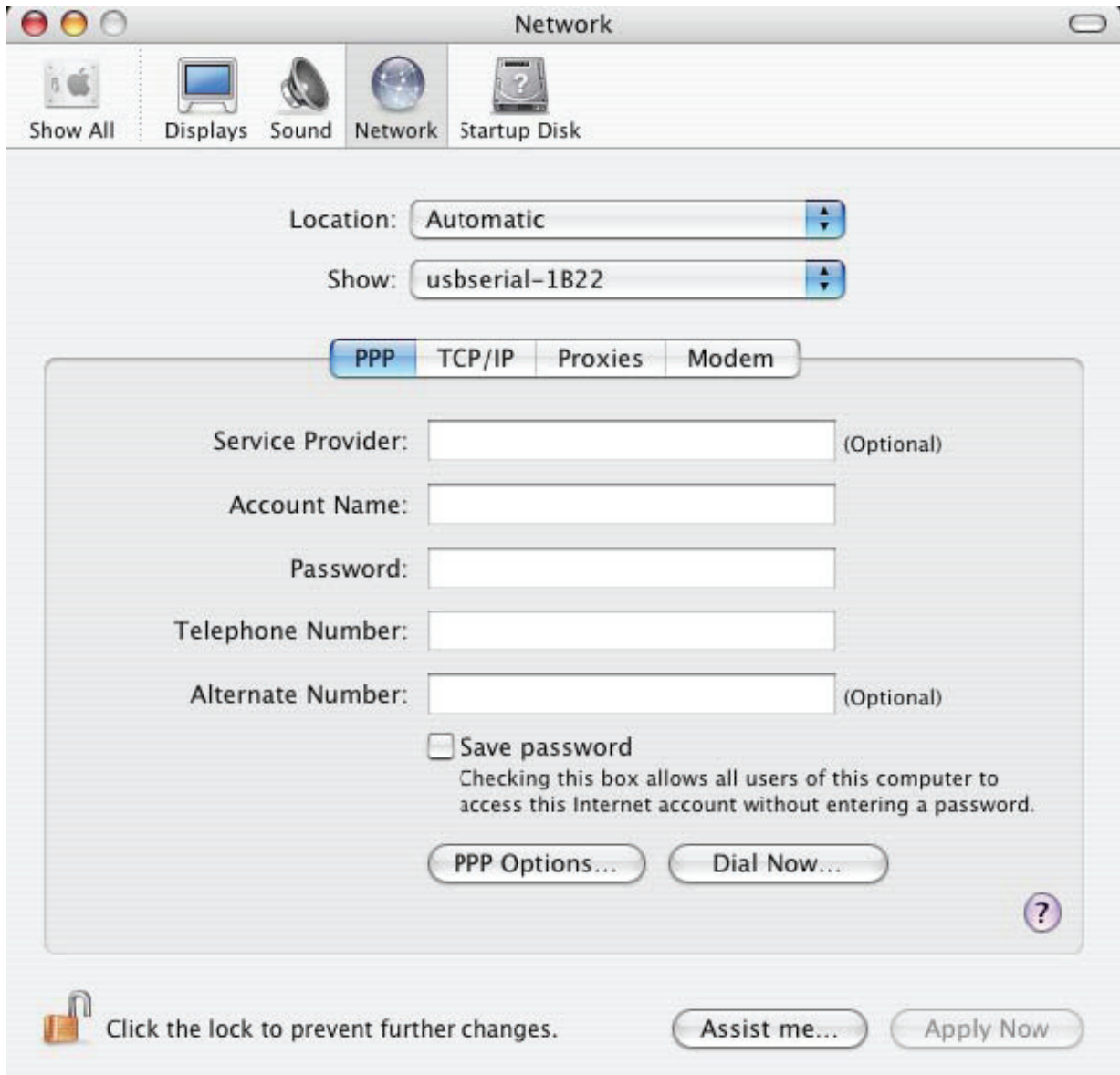


Click OK and select Network Port Configurations from the Show list. The new port can be enabled from this screen by checking the On box and clicking Apply Now.



At this point, it is possible to exit Network and use the device as a COM port. If you wish to set the device up as a modem for an Internet connection, select the new port from the Show list to display the window below. Please note that the FT2232C device has two ports available and these must be configured separately.





Entries for this screen are specific to the Internet account for each user. If you do not know the required details, contact your Internet service provider.

### 3 Uninstalling FTDIUSBSerialDriver

To remove the drivers from Mac OS X, the user must be logged on as root. Root is a reserved username that has the privileges required to access all files.

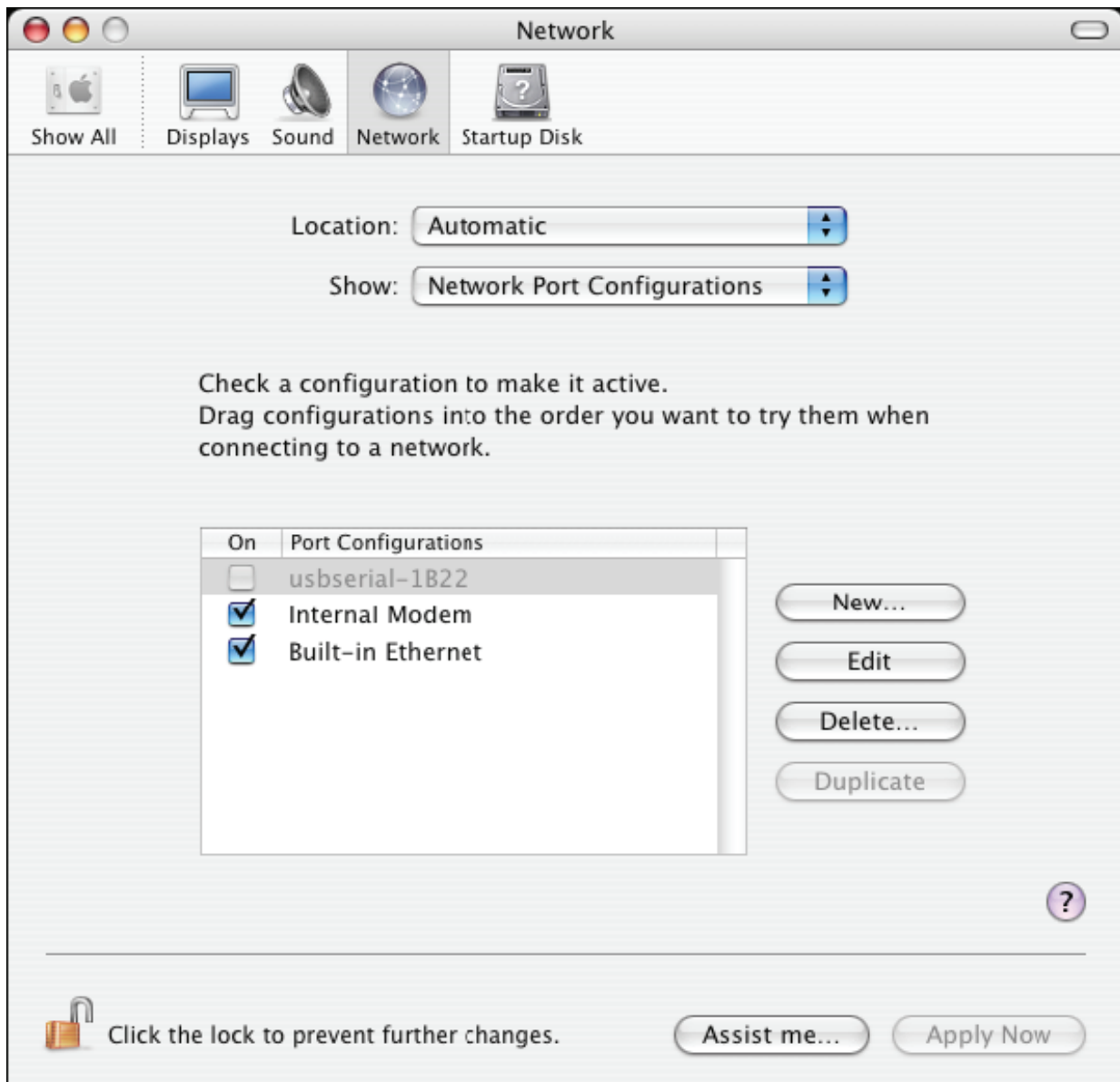
Start a Terminal session (Go > Applications > Utilities > Terminal) and enter the following commands at the command prompt:

```
cd /System/Library/Extensions  
rm -r FTDIUSBSerialDriver.kext
```

The driver will then be removed from the system.

To remove the port from the system, run the application SystemPreferences and select Network. Selecting Network Port Configurations from the Show menu will display the port as greyed out.

Select the uninstalled port and click Delete. Confirm the deletion to remove the port.



#### 4 How do I know what my deviceID is?

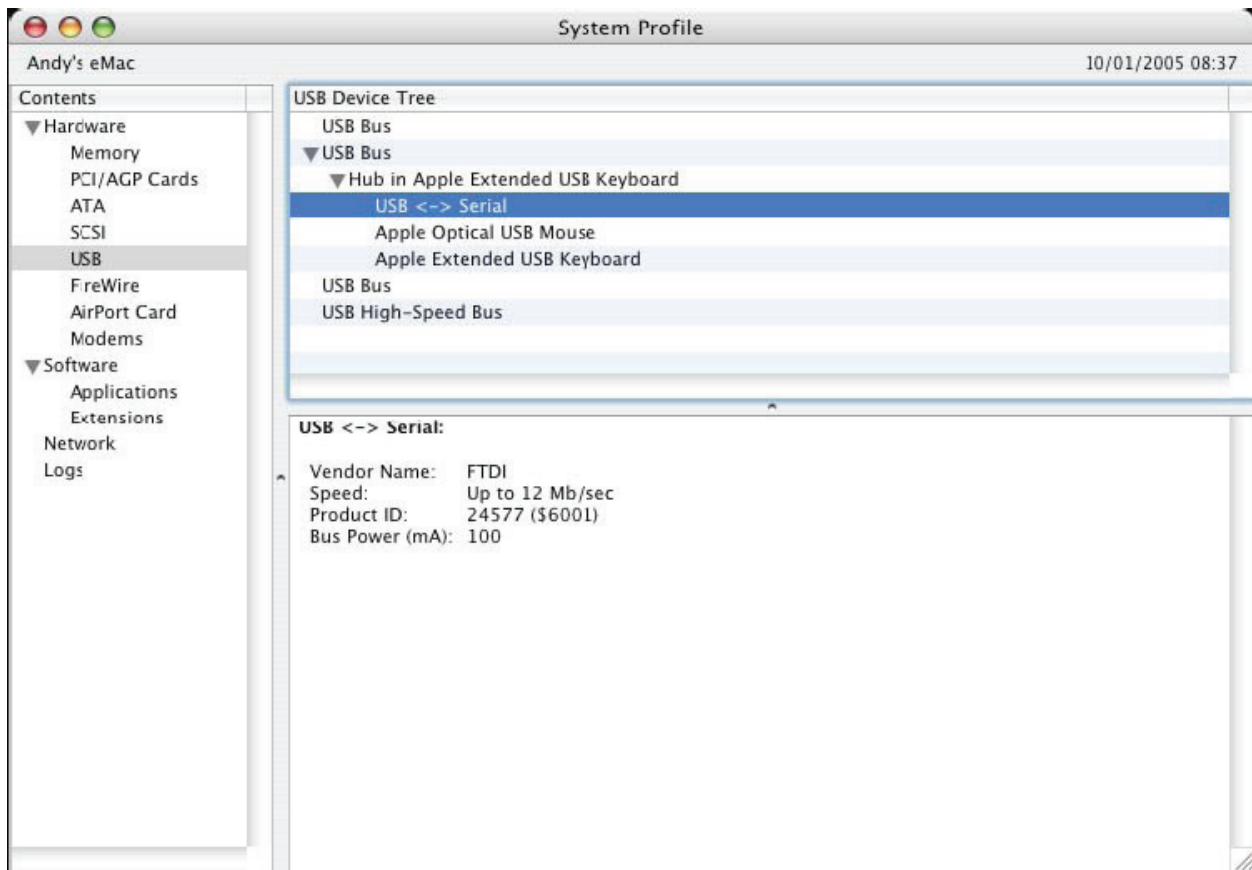
Launch the System Profiler utility, or Apple System Profiler for earlier versions of OS X. This can be accessed by going to the Finder and selecting Applications from the Go menu, then open the Utilities folder.

Select USB under Hardware in the pane to the left and then select the appropriate device from the USB Device Tree. In the screen shot below (from OS 10.3), the device has a deviceID given by:

Vendor Name: FTDI

Product ID: 24577 (\$6001)

A Vendor Name of FTDI is equivalent to a Vendor ID of 1027 (\$0403).



If the device does not work after installing the driver, it is likely to be because the PID is not supported by the driver. If this is the case, contact FTDI Support with the PID that needs to be added to the driver. If the VID is not 0x0403, it is likely that the device is not an FTDI device and we cannot support it.

## Windows CE Installation Guide

### 1 Welcome to the Windows CE Installation Guide

The purpose of this MANUAL is to provide users of USB 2.0 To RS232 with a simple procedure for installing drivers for their devices on PDAs and targets running Windows CE 4.2 and later.

### 2 Installing Devices

The VCP drivers emulate a standard COM port. These can be communicated with in the same manner as any other COM port on the PC.

- \_ ftdi\_ser.dll - the VCP driver file
- \_ FTDIPOINT.inf - user changeable file to allow devices with custom VID and PID combinations to be installed
- \_ Copy all of the unzipped files to the \\Windows directory on the PDA.
- \_ If the PDA requires a host adaptor (e.g. USB host cable, presentation pack or Compact

Flash host card), make sure that it is connected and installed **before** proceeding.

\_ Connect the RS232 device to a host USB port on the PDA. This will provide a dialog box to direct Windows CE to the driver files.

\_ Type the full name of the VCP driver file into the dialog box as shown below. If the file name is incorrect, the driver will not be found and the device will not function.

\_ The device installation is now complete.



\_ The device installation is now complete.