



Delock HDMI-A male to Terminal Block Adapter with Metal housing

Description

This terminal block adapter by Delock can be used to connect bare wires. The Adapter is suitable for special industrial applications.

Protection by enclosure

The metal housing protects the PCB against dirt and damage.



Specification

- Connectors:
 - 1 x HDMI-A male
 - 1 x 20 pin terminal block
- Pin assignment: 1:1
- Pitch: 2.00 mm
- Useable for a cable gauge from 30 to 24 AWG
- Operating temperature: -15 °C ~ 70 °C
- Dimensions (LxWxH): ca. 61.5 x 23.5 x 16.0 mm

Item no. 65201

EAN: 4043619652013

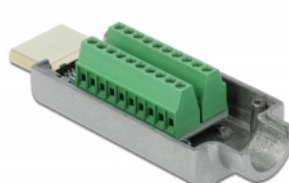
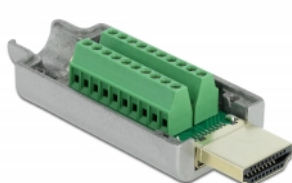
Country of origin: China

Package: • Zip poly bag

Package content

- Adapter
- 2 x locking screws
- 1 x screwdriver

Images





Interface	
Connector 1:	1 x HDMI-A male
Connector 2:	1 x 20 pin terminal block
Technical characteristics	
Operating temperature:	-15 °C ~ 70 °C
Physical characteristics	
Pitch distance:	2.00 mm
Conductor gauge:	30 - 24 AWG
Length:	61.5 mm
Width:	23.5 mm
Height:	16.0 mm